

## ICVG AE , Sam Chang



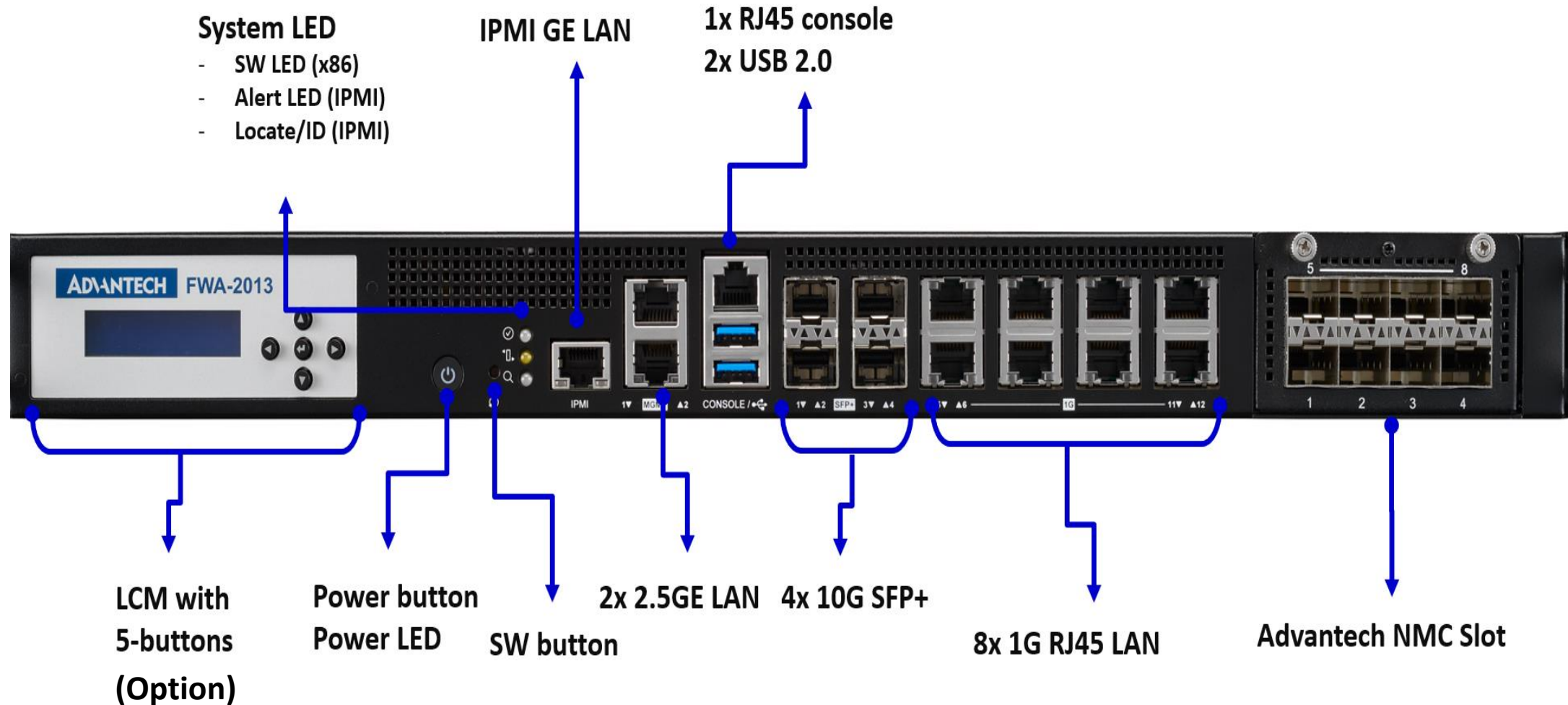
# History

| Version | Date       | Handled by   | Note  |
|---------|------------|--------------|-------|
| Draft   | 2024/05/25 | Sam168.Chang | Draft |
|         |            |              |       |
|         |            |              |       |
|         |            |              |       |

# Agenda

- ☐ System Overview
- ☐ NMC, HD Installation
- ☐ Access the Server via Monitor with VGA port
- ☐ Access the Server via Console port
- ☐ Access the Server via Web UI Access

# FWA-2013 Front IO (include ID information)



# FWA-2013 LED definition

- For more details about SW Define Button and SW Define LED, please refer to “Advantech Linux Platform Software Guide for FWA-2013”

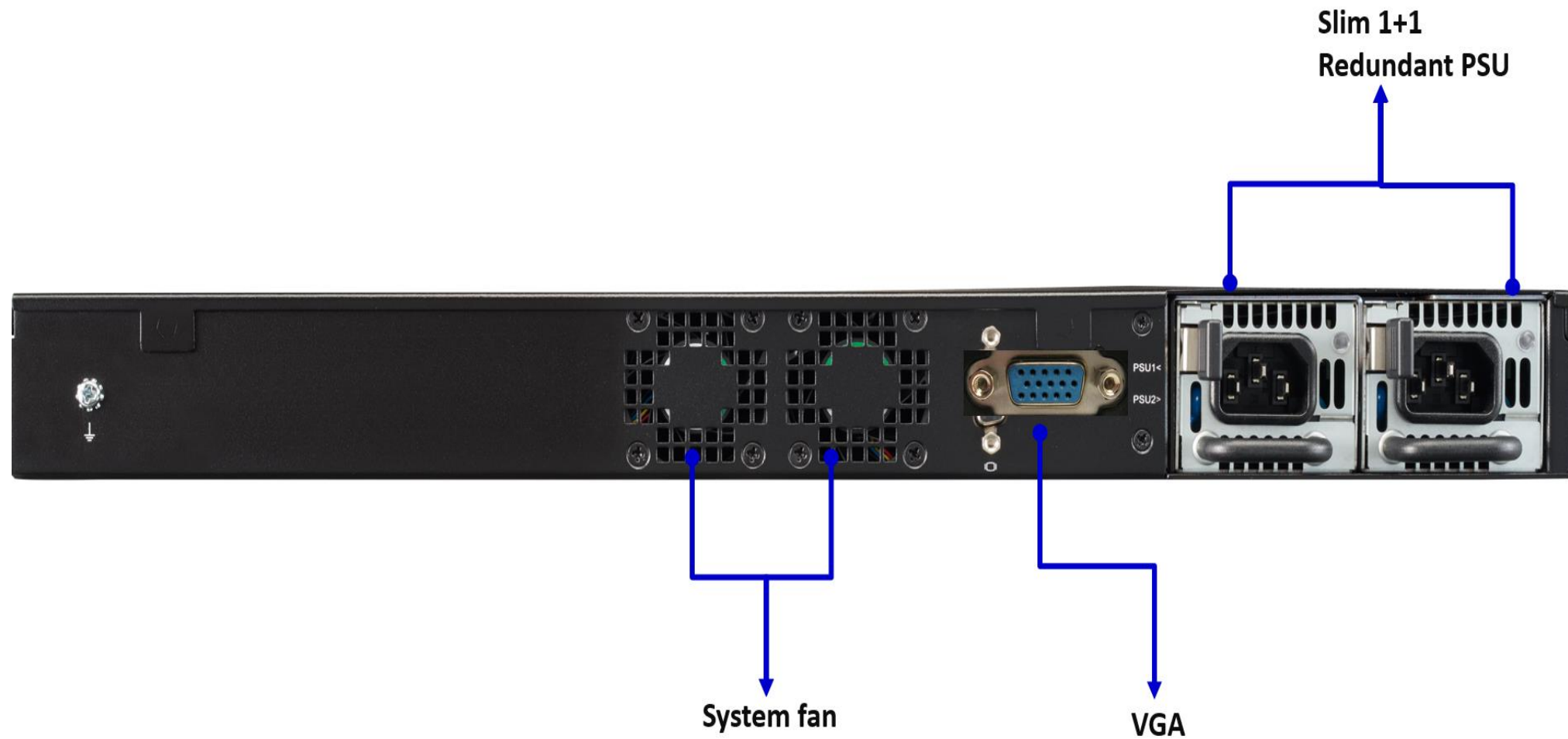


Advantech\_Linux\_Platform\_Software\_Guide.pdf

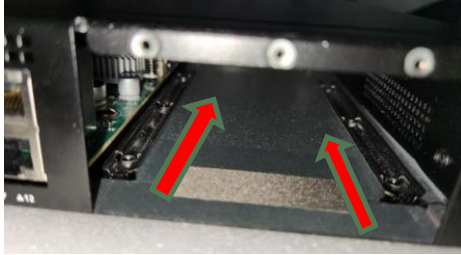
| Design Note: |                     |
|--------------|---------------------|
| Amber        | Software define LED |
| Green        | Alert LED           |
| Amber        | ID LED              |
| Blue         | Power LED           |
| Green        |                     |



# FWA-1013 Rear IO



# NMC Insert



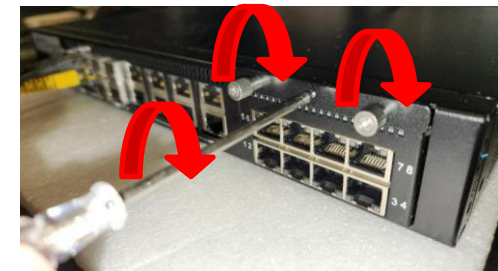
Remove the  
NMC cover



Insert  
the NMC board



The NMC board  
aligned with the left and right sides  
at the bottom of the slot



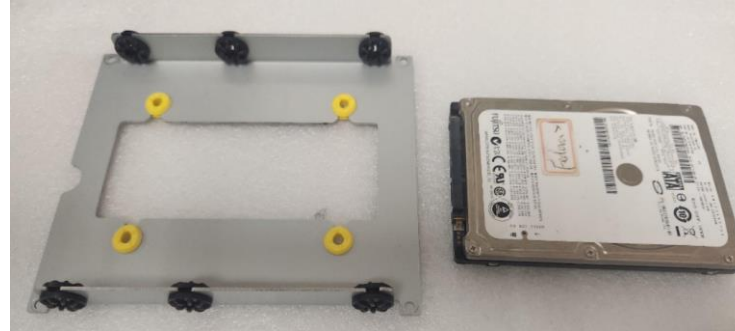
Lock screw



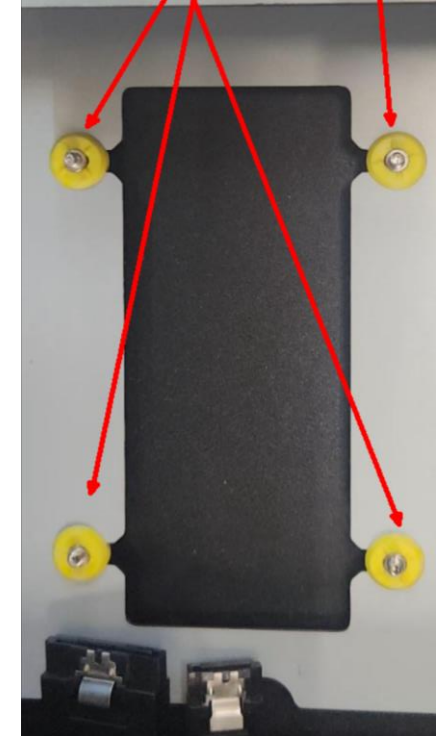
# HD Insert



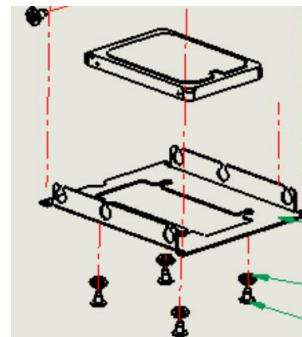
Remove the screw



Insert HD



Lock screw





# Three Options to Connect to the device

There are 3 ways to access platform for OS image installation

- VGA port for OS in TXT & GUI mode
- Console port for OS in TXT only
- BMC Web for OS in TXT & GUI mode

Following pages will introduce page by page.

## Power on the device

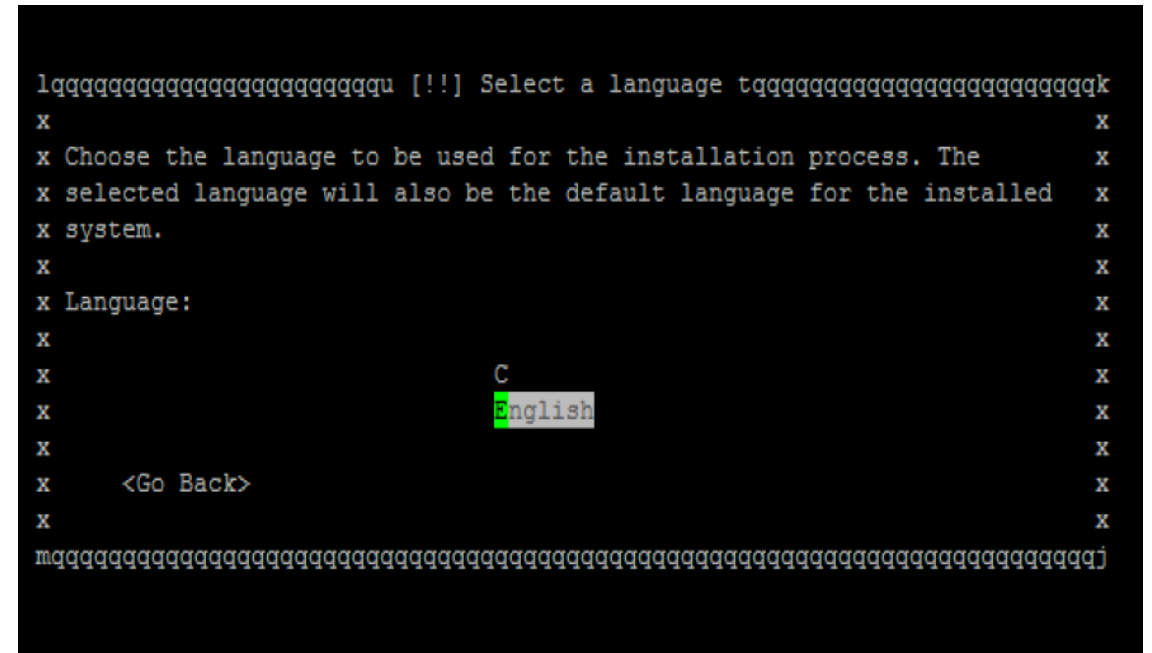
- Prerequisite:
  - ✓ Get AC 100-240V @ 50-60Hz, full range
- Device will boot:
  - ✓ Correct behavior: you can hear FAN rotating in maximum speed for a while then down and also the Power LEDs should light up

# Access the server via Monitor with VGA port

- ❑ Step#1 – Access the device
  - Connect D-Sub 9 via VGA cable to Monitor and 2 USB ports for keyboard and USB stick
  - OS installation with GUI or TXT mode, please check with the OS vendor for details.



*Picture depicted the connector of VGA D-Sub 9.  
VGA output in rear Panel.*

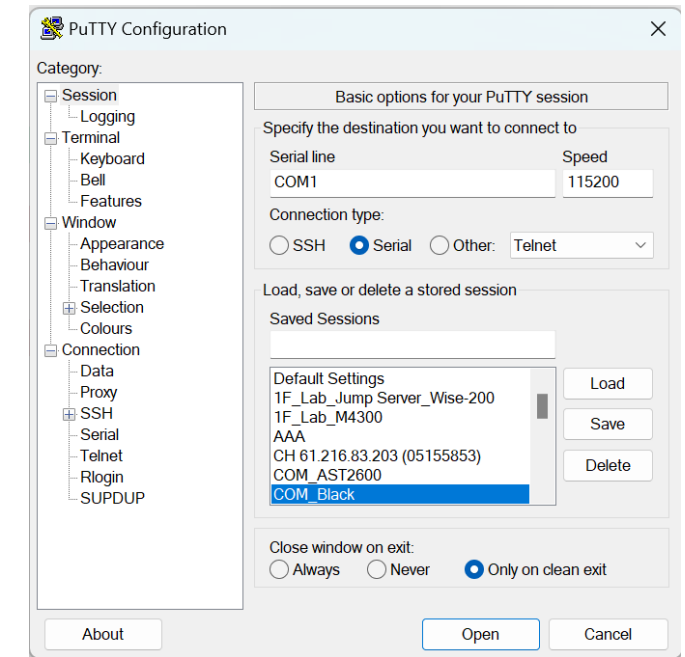


*Picture depicted the GUI for Ubuntu installation on  
Monitor*

# Access the server via Console port [1/3]

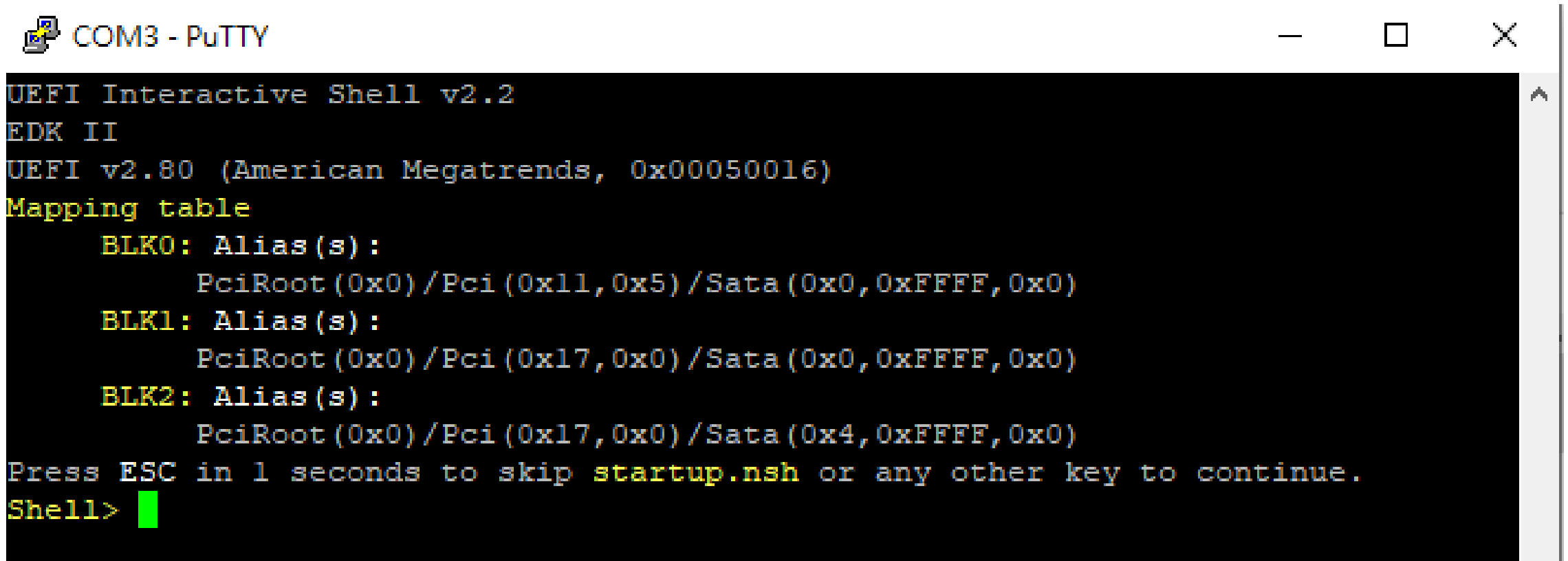


- ❑ Step#2 – Access the device
  - Connect the PC to the server console
  - Use Terminal (like PuTTY) with
    - Baud rate: 115200
    - Data bits : 8
    - Stop bits: 1
  - OS installation without GUI and TXT mode only, please check with the OS vendor for details



**Note:** COM1 as an example, check listed in Device Manager

# Access the server via Console port [2/3]

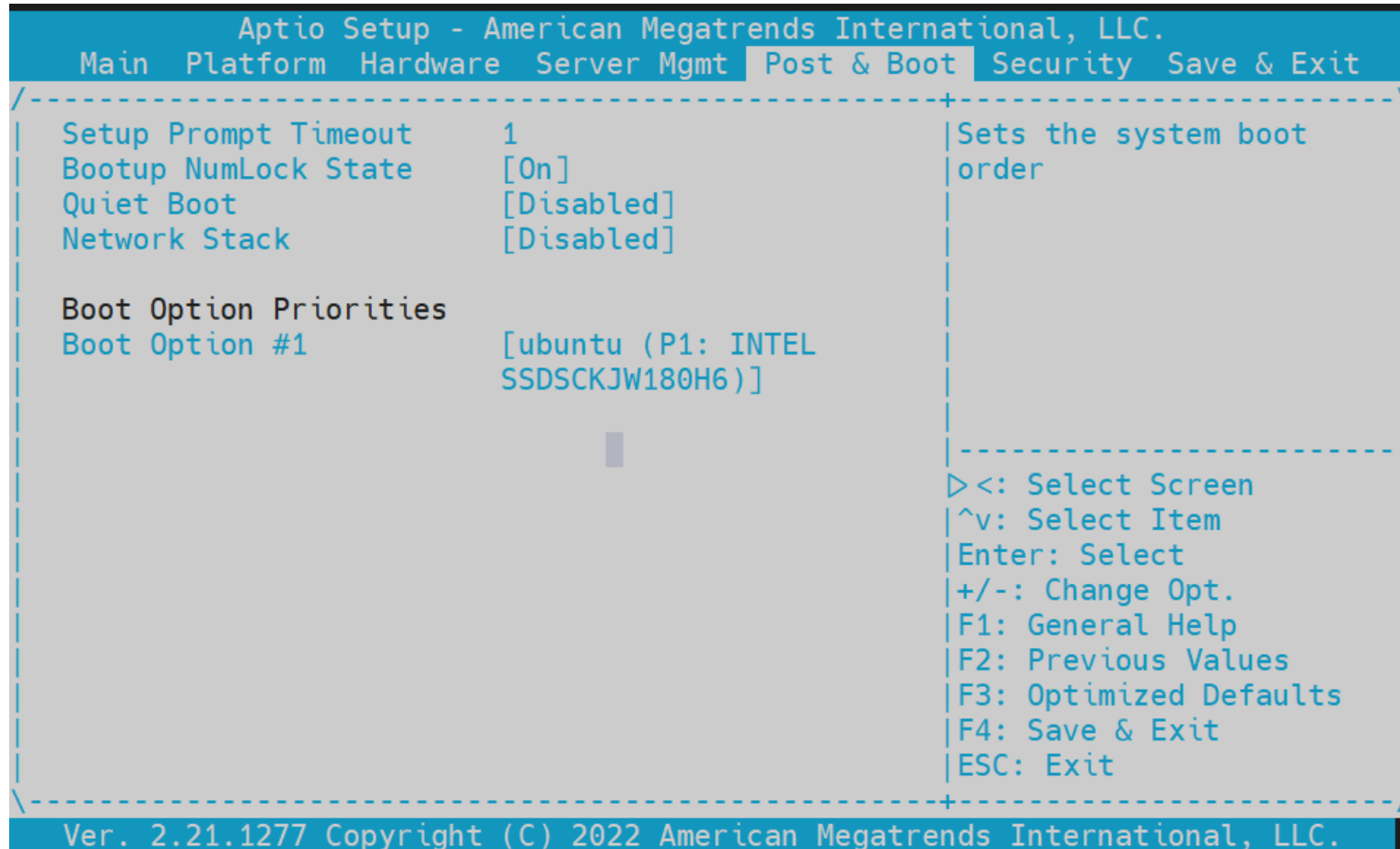


```
COM3 - PuTTY

UEFI Interactive Shell v2.2
EDK II
UEFI v2.80 (American Megatrends, 0x00050016)
Mapping table
  BLK0: Alias(s):
        PciRoot(0x0)/Pci(0x11,0x5)/Sata(0x0,0xFFFF,0x0)
  BLK1: Alias(s):
        PciRoot(0x0)/Pci(0x17,0x0)/Sata(0x0,0xFFFF,0x0)
  BLK2: Alias(s):
        PciRoot(0x0)/Pci(0x17,0x0)/Sata(0x4,0xFFFF,0x0)
Press ESC in 1 seconds to skip startup.nsh or any other key to continue.
Shell>
```

*Picture depicted successfully server access via console if no OS installed*

# Access the server via Console port [3/3]

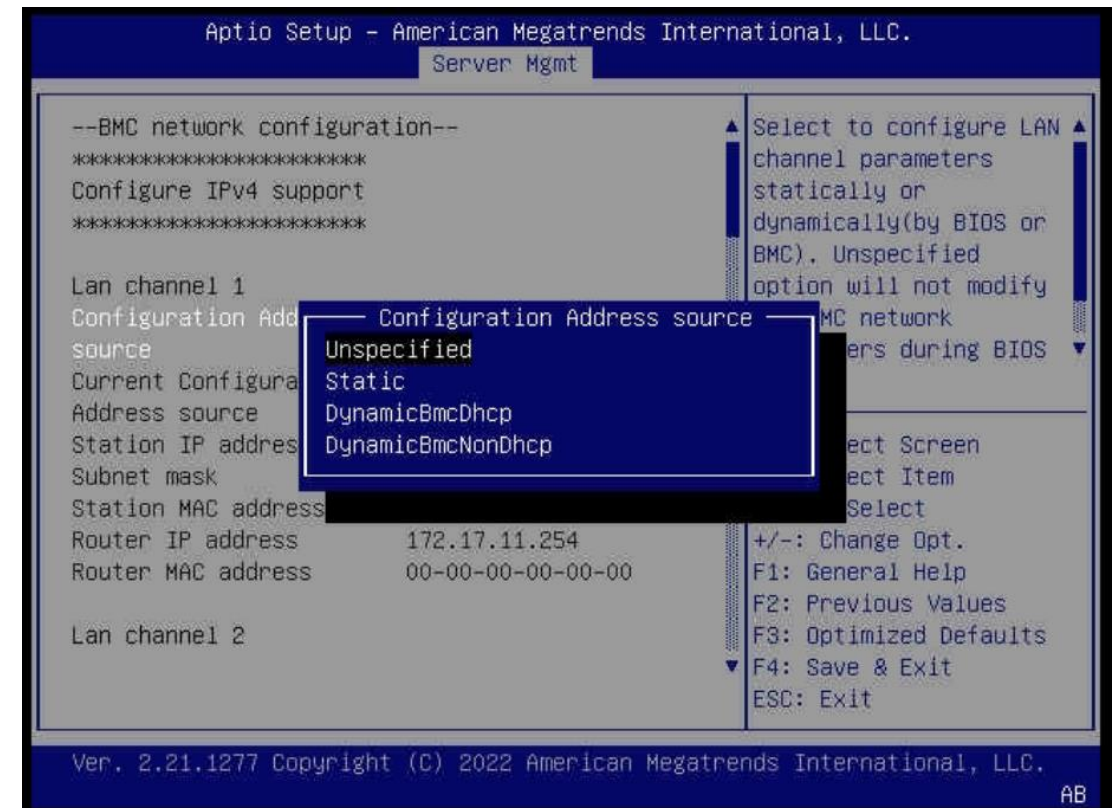
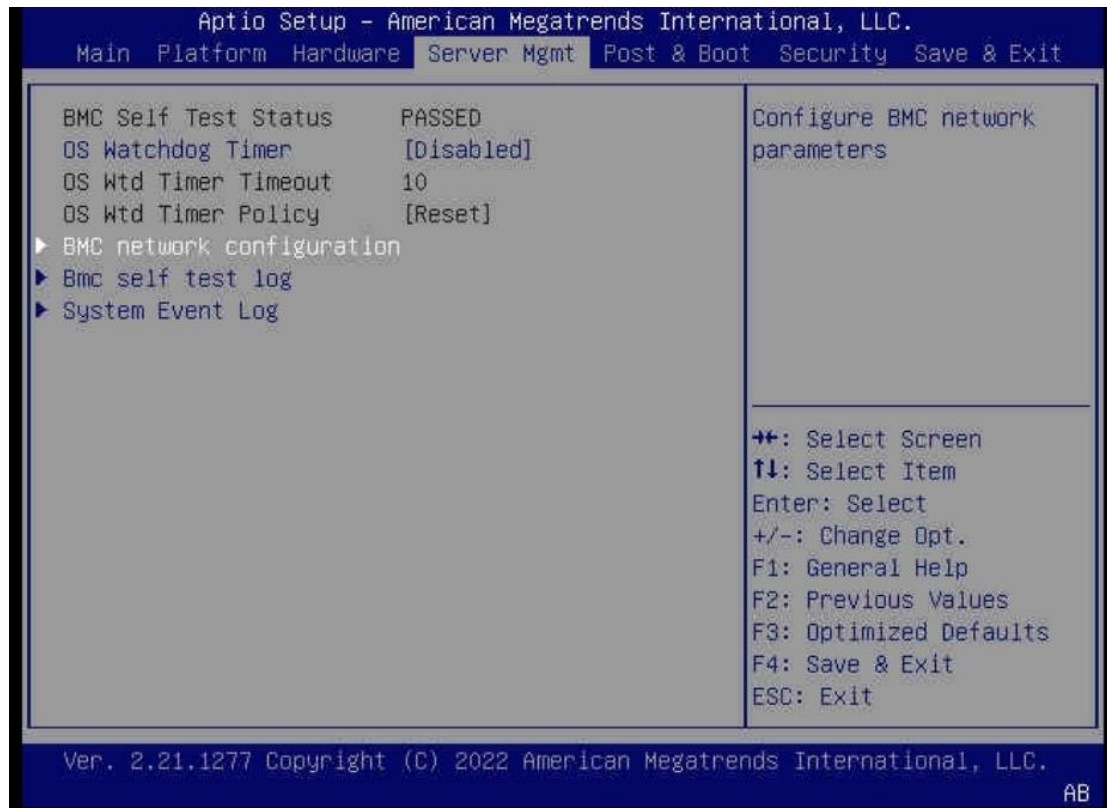


*Picture depicted boot option priorities in Post & Boot page from BIOS Menu*

# Access the server via BMC Web UI Access[1/4]

## ❑ Setup BMC IP Address

Press **DEL** after boot up to enter BIOS, and select "**Server Mgmt**" page, then "**BMC network configuration**".



# Access the server via BMC Web UI Access [2/4]

After completing the steps above (BMC Web ip configured via either Bios or IPMItool), open your favorite browser the enter the Web UI IP address as below: <https://BMCIP>

The default login credentials by default:

- Username: **administrator**
- Password: **advantech**

The screenshot displays the Advantech BMC Web UI interface. The top header shows the Advantech logo and the model FWA-2013. The main navigation bar is titled 'Configuration - Maintenance' and includes links for Versions, Configurations, Firmware Upgrade, and BMC Diagnostic Log. A status bar on the right indicates a 'Major' alert, 'Power Control', 'BIOS Post', 'Refresh', 'English', and 'Logout'.

The left sidebar contains a list of navigation items: Overview, Health, Advanced Inventory, Sensor Status, Event Log, Web Alert, Session, Configuration, Alerts, Network, Extra Configurations, Maintenance (highlighted), BMC Interface Control, RAID Management, Remote Control, System Power Control, Front Panel, iKVM Redirection, Remote Serial Console, and Node Explorer.

The main content area is divided into two columns under the 'Maintenance' section:

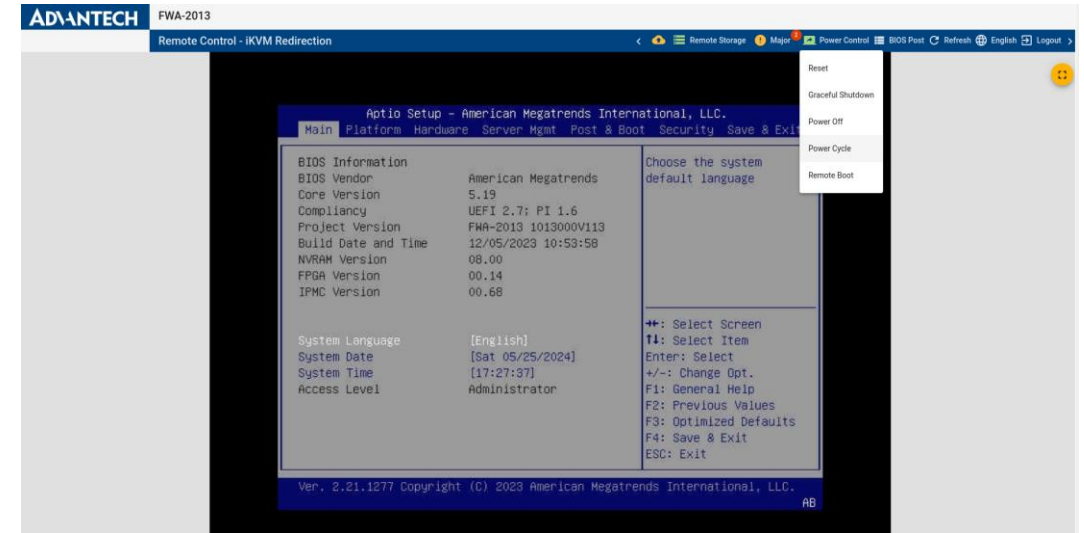
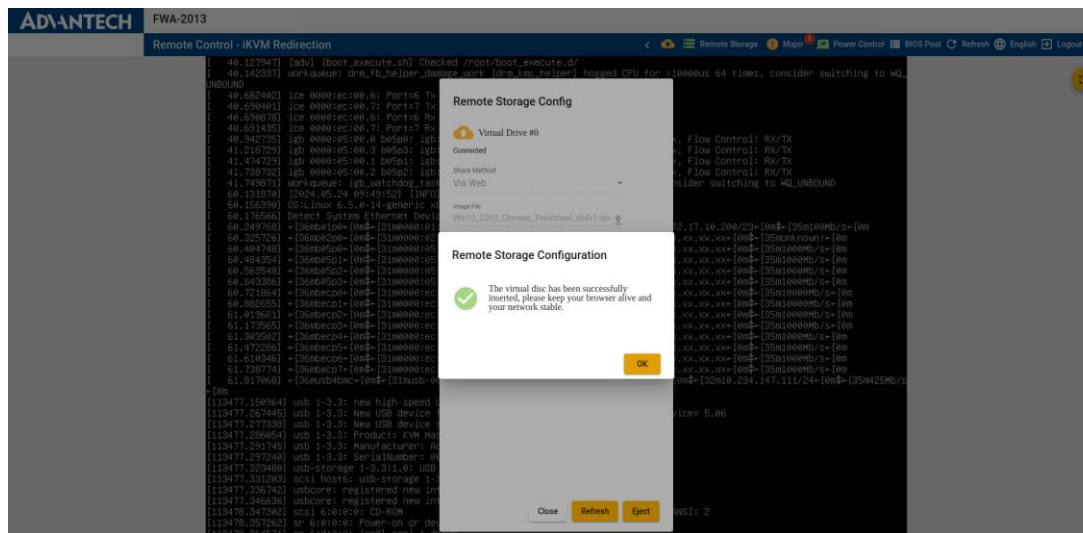
- Firmware Versions:**
  - BL: 0.30.00000000
  - BMC: 0.68.00000000
  - BMCONF: 1.00.00000000
  - FPGA: 0.14.00000000
  - BIOS: 1.13.00000000
  - NVRAM: 8.00.00000000
- Software Versions:**
  - Advantech Node Explorer: 1.29.0.3401
  - Advantech iKVM: 1.11.4.386
  - Advantech Remote Storage: 1.0.13.81
  - More ...

The bottom of the sidebar shows the 'Node Explorer' section with the text 'Version 1.29.0 ( Revision 3401 )'.



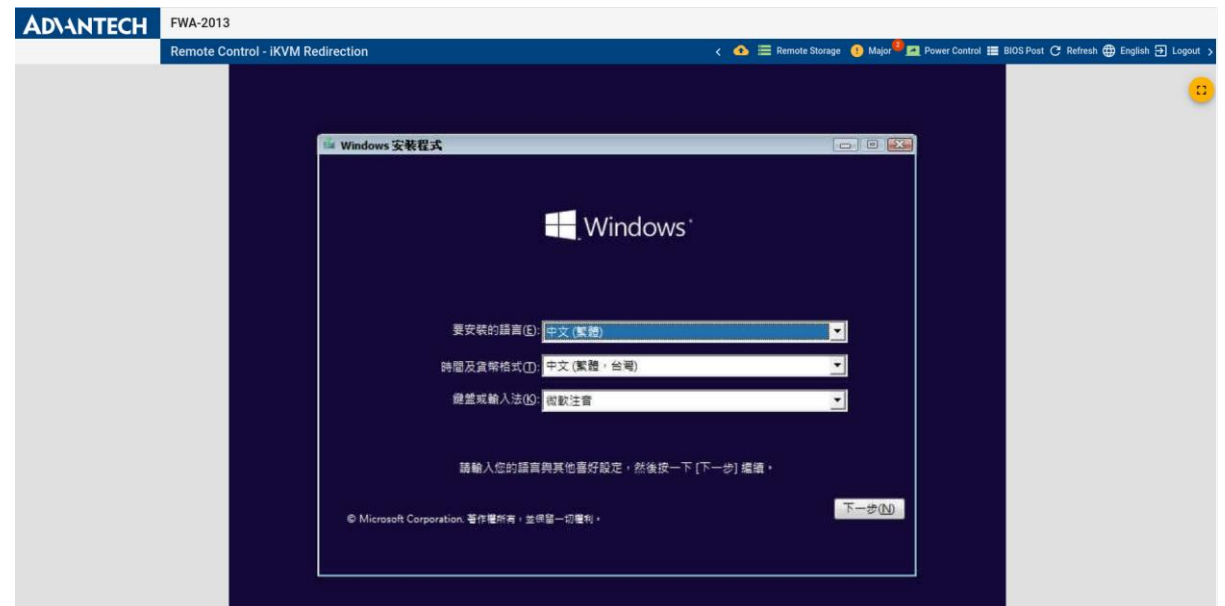
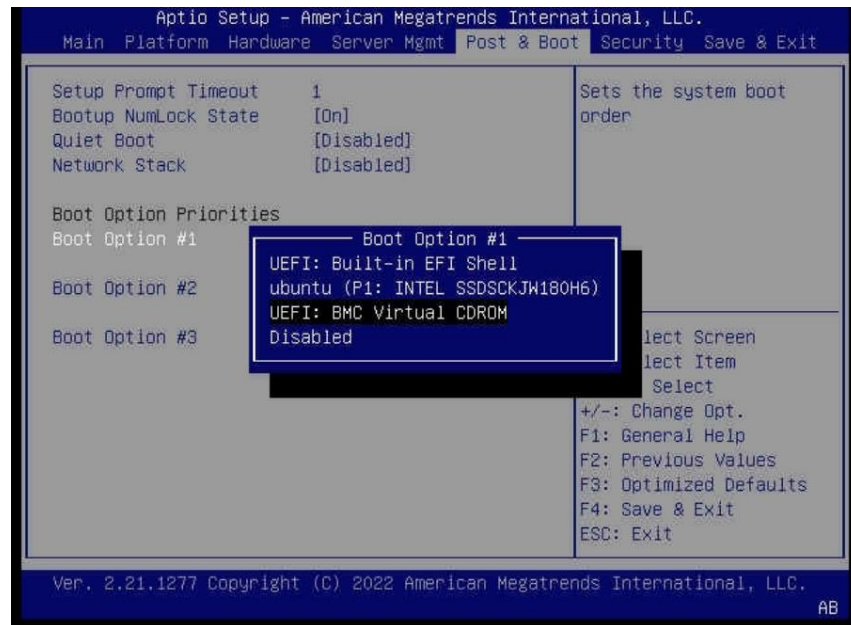
# Access the server via BMC Web UI Access [3/4]

- Remote Control → iKVM Redirection, select the OS image through Remote Storage for installation
- Power Cycle



# Access the server via BMC Web UI Access [4/4]

- Press F2 or DEL to enter the BIOS menu
- Select “UEFI: BMC Virtual CDROM” as Boot Option from **Save & Exit** on BIOS Menu.
- The OS installation guide GUI popup after BIOS reset



*Go Together,  
We Go Far and Grow Big*

