

How to install CentOS 6.9 in UEFI mode by console redirection

V1.1

Initiated by	Alan Ku	Job Title	Tech Support Engineer	Signature	
Release Status	V1.1			Release Date	2020/11/04

Version

Version	Date	Editor	Comment
V1.0	2019/04/01	Alan Ku	First released version
V1.1	2020/11/04	Alan Ku	Correct content

Contents

Version 2
Purpose: 4
Procedures: 4

Purpose:

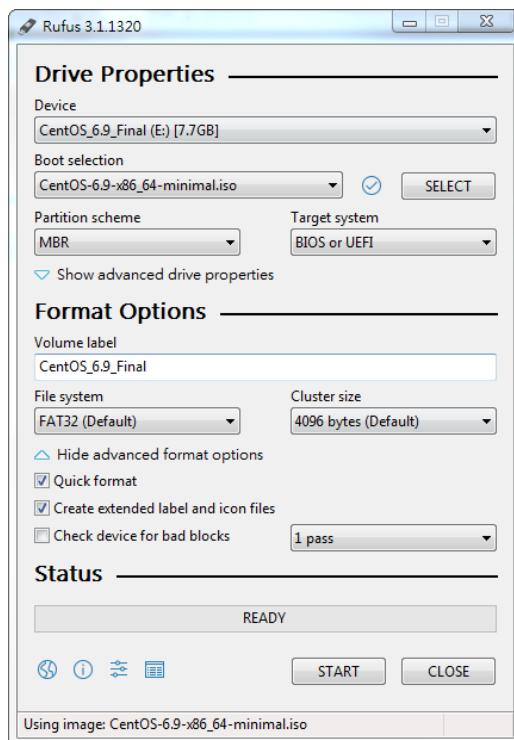
Guide users how to restore OS .iso file to USB drive and select UEFI mode to install.

Procedures:

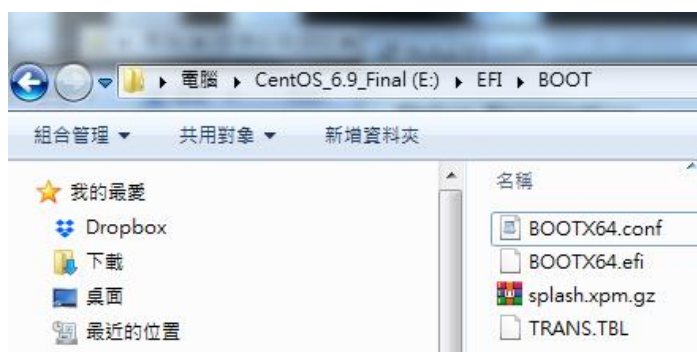
1. Download CentOS .iso file from web official release.

<http://vault.centos.org/>

2. Restore .iso file to USB drive. (in this document, “rufus” is a 3rd party tool used to restore .iso file, just for reference)



3. Edit “BOOTX64.conf” under “E:\EFI\BOOT” in USB drive.

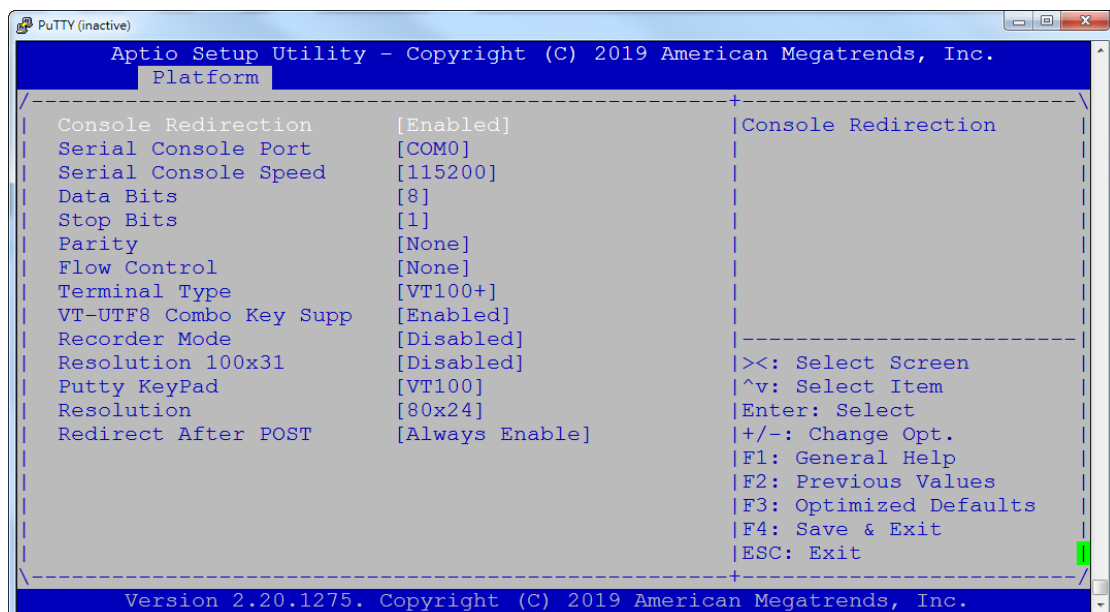


Add “console=tty0 console=ttyS0,115200n8” after vmlinuz.

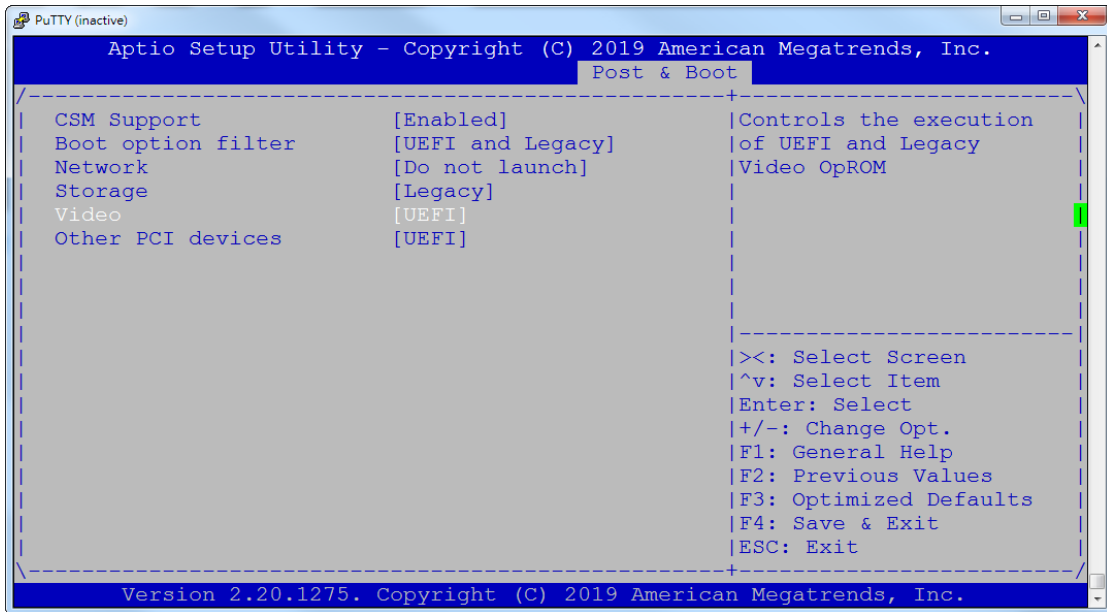
(115200 is the buad rate and a value by user define)

```
#debug --graphics
default=0
splashimage=/EFI/BOOT/splash.xpm.gz
timeout 5
hiddenmenu
title CentOS 6.9
    kernel /images/pxeboot/vmlinuz console=tty0 console=ttyS0,115200n8
    initrd /images/pxeboot/initrd.img
title Install system with basic video driver
    kernel /images/pxeboot/vmlinuz nomodeset askmethod
    initrd /images/pxeboot/initrd.img
title rescue
    kernel /images/pxeboot/vmlinuz rescue askmethod
    initrd /images/pxeboot/initrd.img
```

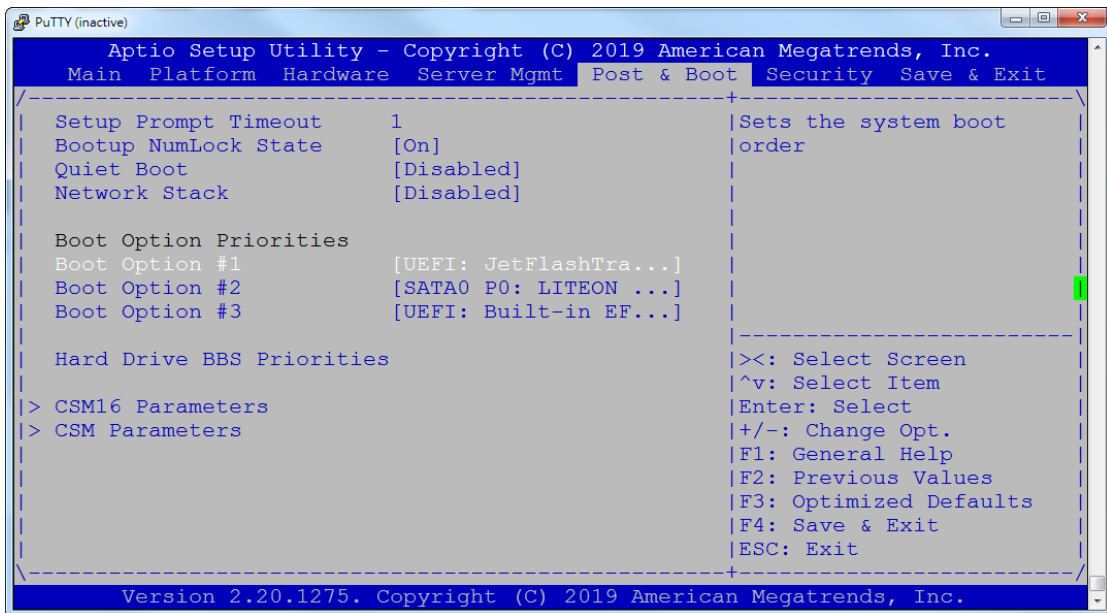
4. Insert USB drive on x86 platform and enable BIOS console redirection.

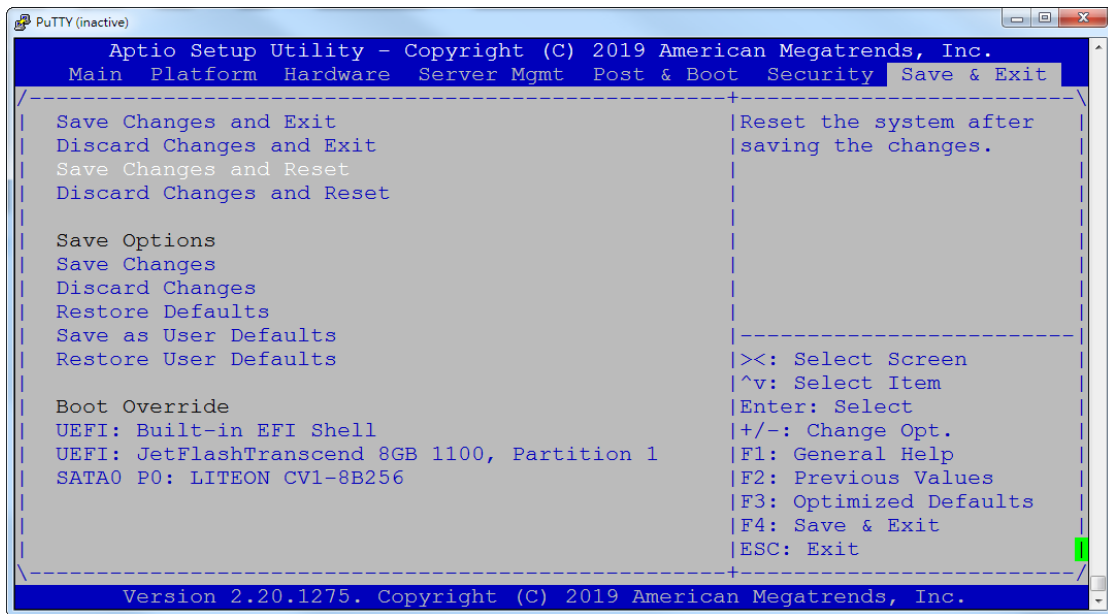


5. Set Video to UEFI/do not launch in BIOS "CSM parameters" setting.



6. Set USB drive UEFI partition on first boot priority, then save changes and reset.





7. After system reboot, installation pages would redirect to console for further steps, example as following.

