

# PCIe Card Installation Guide for SKY-8100



# Prerequisite

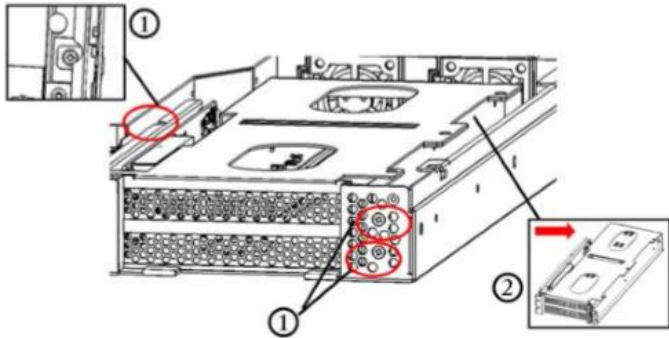
- PCIe cards are to be installed
- If any PCIe cards are already have been installed before, please remove all IO cables and / or extra power cables connected to the PCIe cards.
- Power off the server and remove the power cable.

# A. Remove PCIe riser card cage

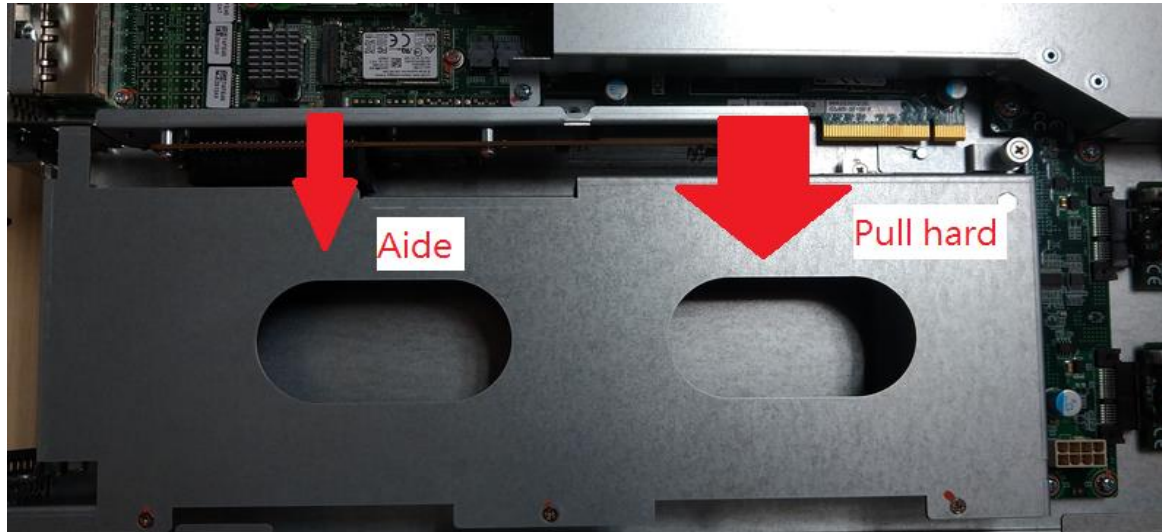
Review the installation procedures in user manual and below before performing any installation.

To install the PCIe card, please follow the instructions:

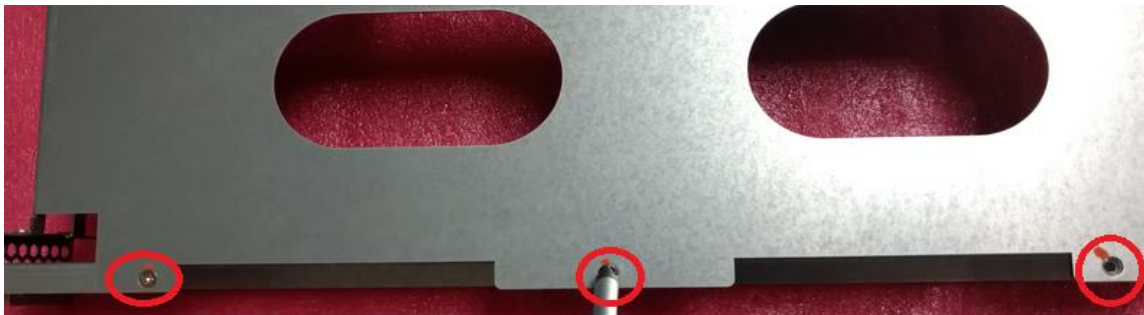
1. Loosen the 3 screws shown circled ①②③
2. Please remove cage's screws with a screwdriver



2. Please unplug PCIe riser cage.



3. Please remove cage's screws with a screwdriver



## B. Install PCIE card in PCIE riser cage

1. Please insert PCIE card in PCIE riser cage, and install cage's screws with a screwdriver

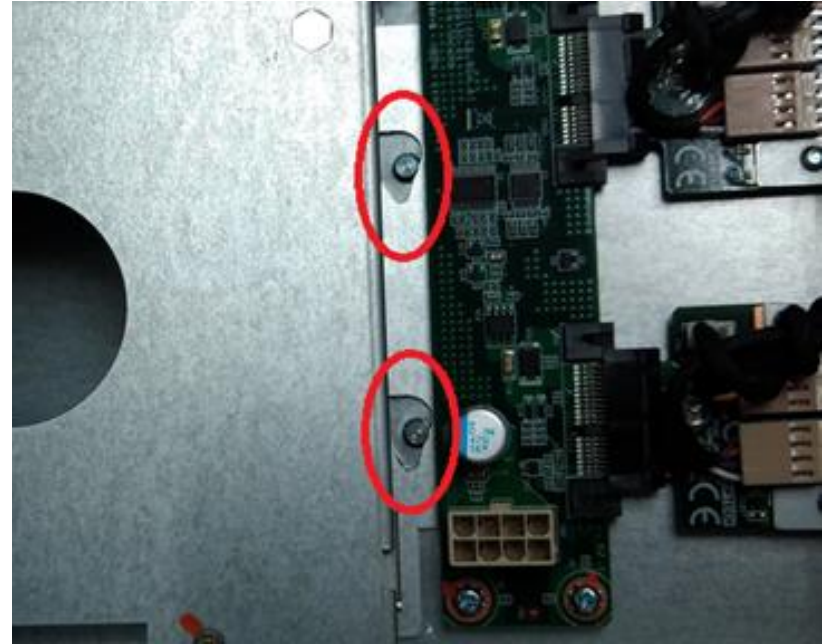
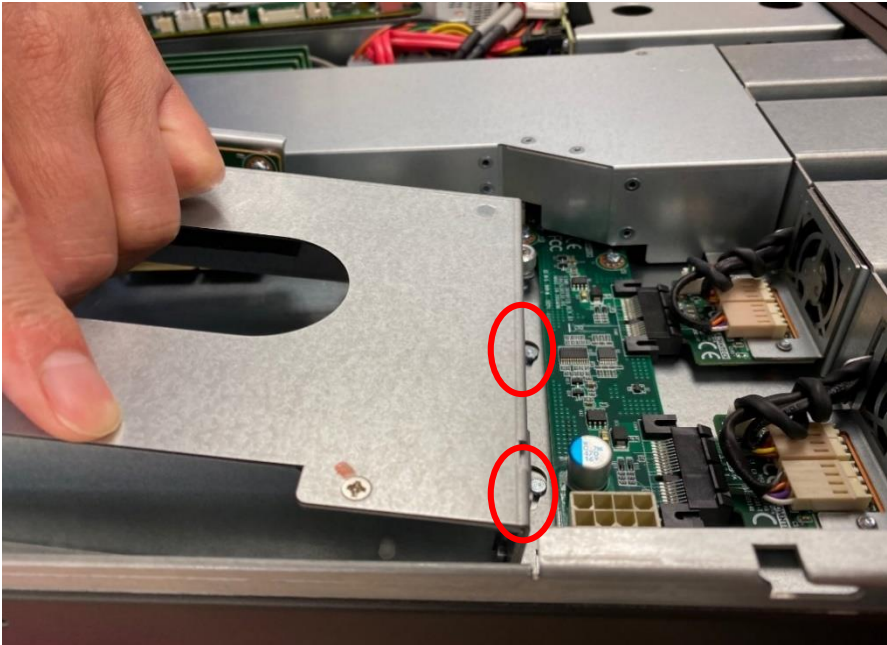


2. Please install cage's screws with a screwdriver

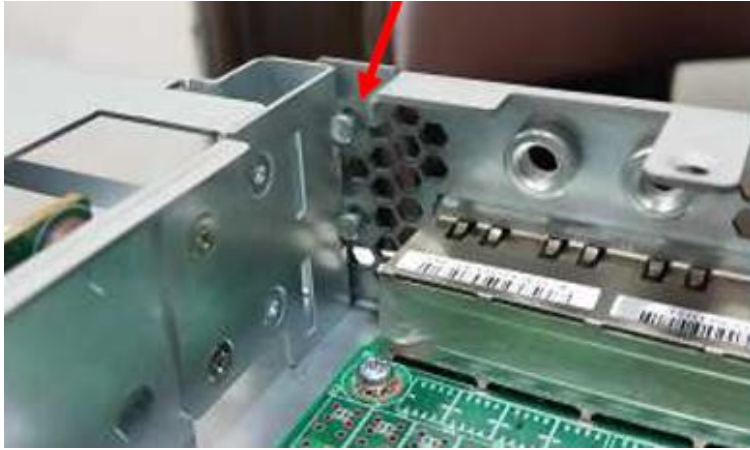


## C. Install PCIe riser card cage in SKY-8100

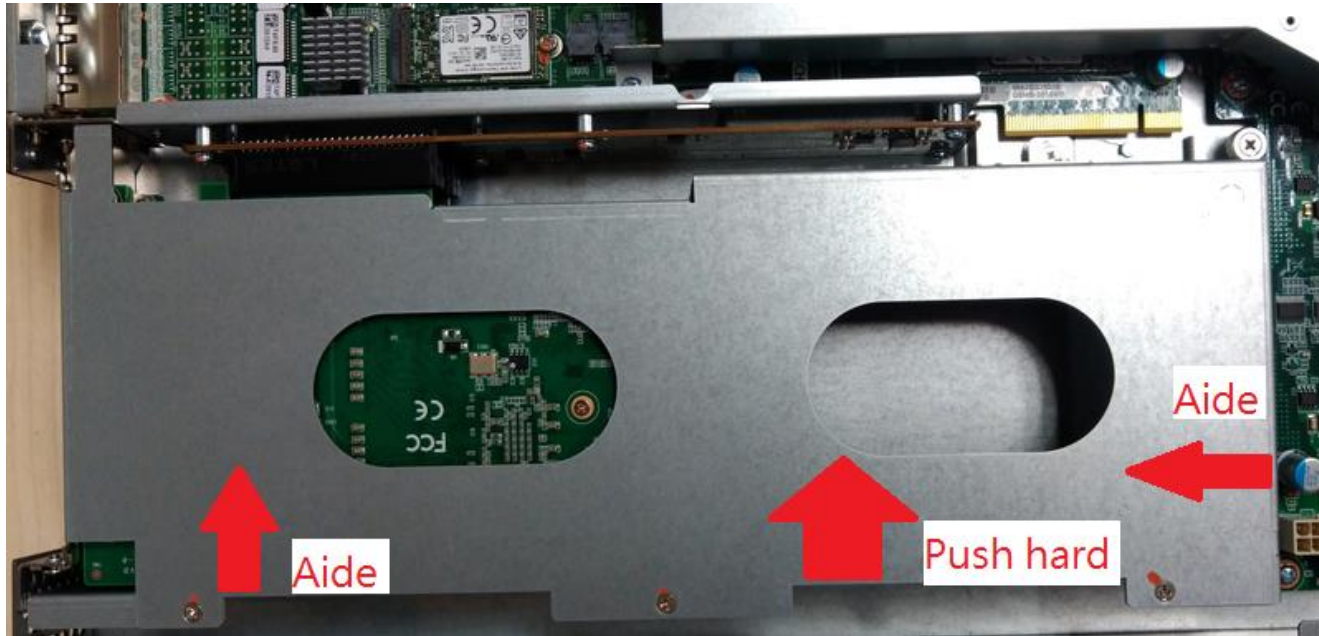
1. Please align the PCIe card cage (with rear pilot hole) with the T nail at an oblique angle.
2. Please lay-down the PCIe card cage horizontally with chassis, and stick with T nail tightly.



3. Please assemble PCI slot by stuck in location column

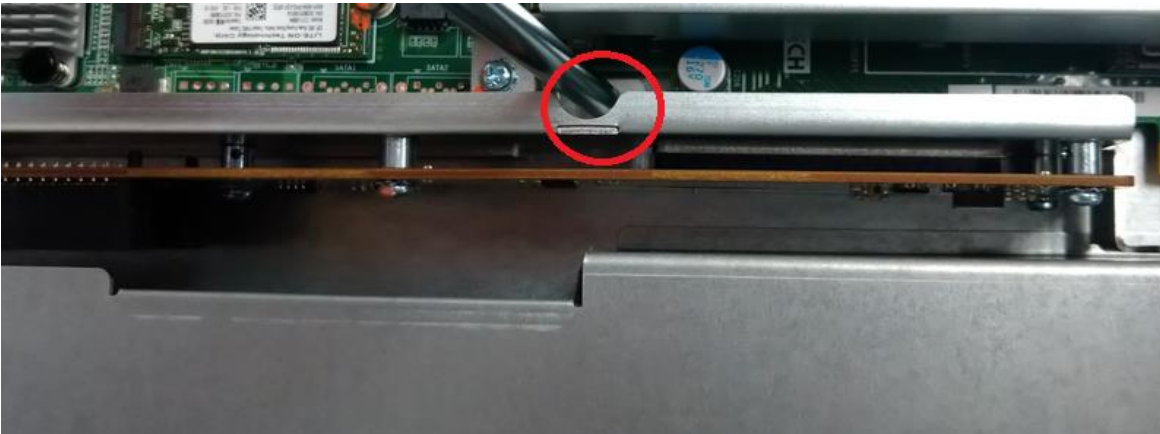
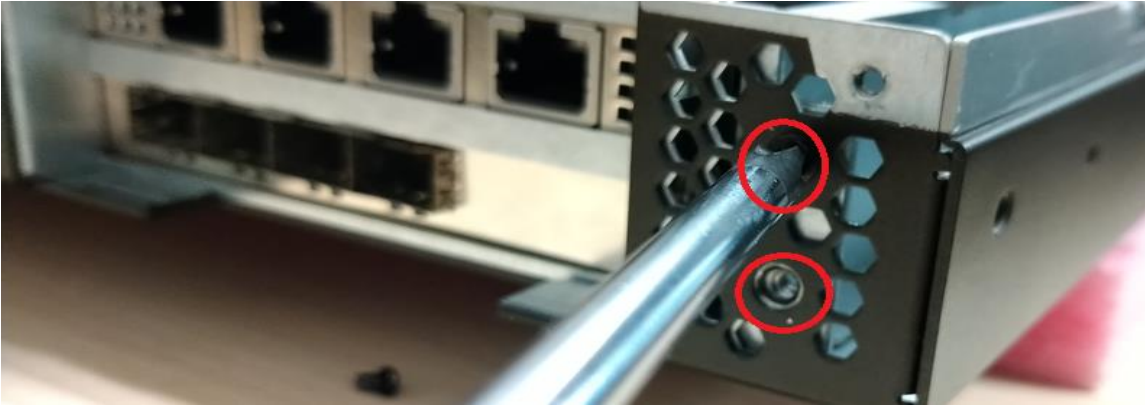


#### 4. Please plug PCIe riser cage





#### 4. Please install cage's screws with a screwdriver



*Go Together,  
We Go Far and Grow Big*

