

USER MANUAL

REVISION 0.10

DATE 2019/09/05

FWA-1010VC-WMT

**WALL MOUNT KIT FOR FWA-1010VC NETWORK
PLATFORM**

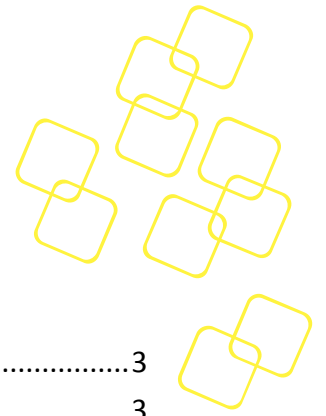
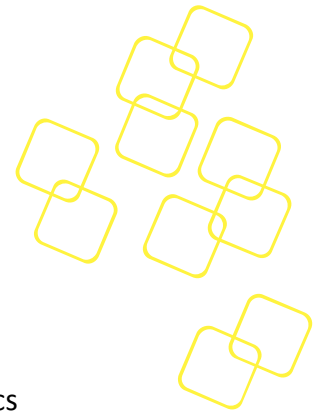


Table of Content

| | |
|---|---|
| <i>Packing List</i> | 3 |
| <i>Order Information</i> | 3 |
| <i>Warnings, Cautions and Notes</i> | 3 |
| <i>Safety Instructions</i> | 4 |
| <i>Technical Support and Assistance</i> | 6 |
| <i>Warranty and RMA</i> | 7 |
| <i>Overview</i> | 8 |
| <i>Assembly Illustration</i> | 9 |



Packing List

Before installation, please confirm that all components are include

| | |
|---|--------|
| Screw M3x4L S/S D=4.8 H=1 (2+) ST BZn | x6 pcs |
| Wallmount bracket _1 for FWA-1010VC | x1pc |
| Wallmount bracket _2 for FWA-1010VC | x1pc |
| Wallmount bracket _Sside for FWA-1010VC | x2pc |

If any item is missing, please contact to your Advantech representative for assistance

Order Information

FWA-1010VC-RMT

Warnings, Cautions and Notes



Warning! Warnings indicate conditions, which, if not observed, can cause personal injury.



Caution! Cautions are included to help you avoid damaging hardware or losing data.



Note! Notes provide additional information.



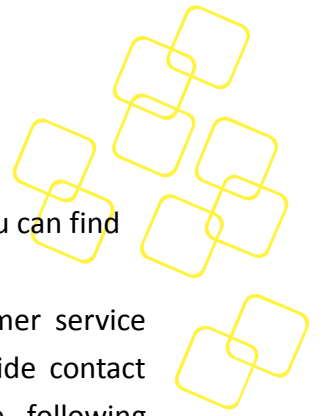
Safety Instructions

1. Read these safety instructions carefully.
2. Keep this User Manual for later reference.
3. Disconnect this equipment from any AC outlet before cleaning. Use a damp cloth. Do not use liquid or spray detergents for cleaning.
4. For plug-in equipment, the power outlet socket must be located near the equipment and must be easily accessible.
5. Keep this equipment away from humidity.
6. Put this equipment on a reliable surface during installation. Dropping it or letting it fall may cause damage.
7. The openings on the enclosure are for air convection. Protect the equipment from overheating. **DO NOT COVER THE OPENINGS.**
8. Make sure the voltage of the power source is correct before connecting the equipment to the power outlet.
9. Position the power cord so that people cannot step on it. Do not place anything over the power cord.
10. All cautions and warnings on the equipment should be noted.
11. If the equipment is not used for a long time, disconnect it from the power source to avoid damage by transient overvoltage.
12. Never pour any liquid into an opening. This may cause fire or electrical shock.
13. Never open the equipment. For safety reasons, the equipment should be opened only by qualified service personnel.
14. If one of the following situations arises, get the equipment checked by service personnel:
 - The power cord or plug is damaged.
 - Liquid has penetrated into the equipment.
 - The equipment has been exposed to moisture.
 - The equipment does not work well, or you cannot get it to work according to the user's manual.
 - The equipment has been dropped and damaged.
 - The equipment has obvious signs of breakage.
15. Do not leave this equipment in an environment where the storage temperature may go below -40° C (-40° F) or above 85° C (185° F). This could damage the equipment. The equipment should be in a controlled environment.
16. Caution: Danger of explosion if battery is incorrectly replaced. Replace only with the same or equivalent type recommended by the manufacturer, discard used batteries according to the manufacturer's instructions.
17. The sound pressure level at the operator's position according to IEC 704-1:1982 is no more than 70 dB (A).
18. **RESTRICTED ACCESS AREA:** The equipment should only be installed in a Restricted



Access Area.

19. **DISCLAIMER:** This set of instructions is given according to IEC 704-1. Advantech disclaims all responsibility for the accuracy of any statements contained herein.



Technical Support and Assistance

1. Visit the Advantech web site at www.advantech.com/support where you can find the latest information about the product.
2. Contact your distributor, sales representative, or Advantech's customer service centre for technical support if you need additional assistance. Worldwide contact information can be found on www.advantech.com. Please have the following information ready before you call:
 - Product name and serial number
 - Description of your peripheral attachments
 - Description of firmware and software versions installed on the product
 - A complete description of the problem
 - The exact wording of any error messages
3. For more information please contact ncg@advantech.com or visit www.advantech.com/nc.



Warranty and RMA

Product Warranty (2 years)

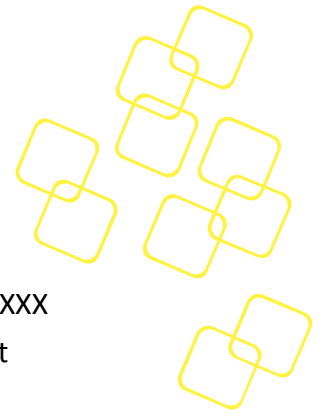
Advantech warrants to you, the original purchaser, that each of its products will be free from defects in materials and workmanship for two years from the date of purchase.

This warranty does not apply to any products which have been repaired or altered by persons other than repair personnel authorized by Advantech, or which have been subject to misuse, abuse, accident or improper installation. Advantech assumes no liability under the terms of this warranty as a consequence of such events.

Because of Advantech's high quality-control standards and rigorous testing, most of our customers never need to use our repair service. If an Advantech product is defective, it will be repaired or replaced at no charge during the warranty period. For out of-warranty repairs, you will be billed according to the cost of replacement materials, service time and freight. Please consult your dealer for more details.

If you think you have a defective product, follow these steps:

1. Collect all the information about the problem encountered. (For example, CPU speed, Advantech products used, other hardware and software used, etc.) Note anything abnormal and list any onscreen messages you get when the problem occurs.
2. Call your dealer and describe the problem. Please have your manual, product, and any helpful information readily available.
3. If your product is diagnosed as defective, obtain an RMA (return merchandise authorization) number from your dealer. This allows us to process your return more quickly.
4. Carefully pack the defective product, a fully-completed Repair and Replacement Order Card and a photocopy proof of purchase date (such as your sales receipt) in a shippable container. A product returned without proof of the purchase date is not eligible for warranty service.
5. Write the RMA number visibly on the outside of the package and ship it prepaid to your dealer.



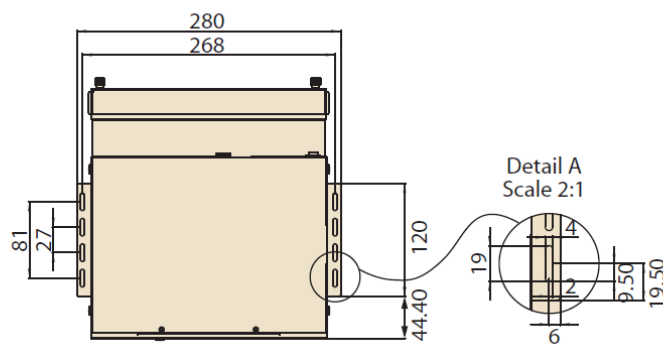
Overview

FWA-1010VC-WMT is an optional rack mount kit design for FWA-1010VCXXXX Network Platform. FWA-1010VC-WMT is designed based on 1U rackmount specification. For further information, please contact to your Advantech representative

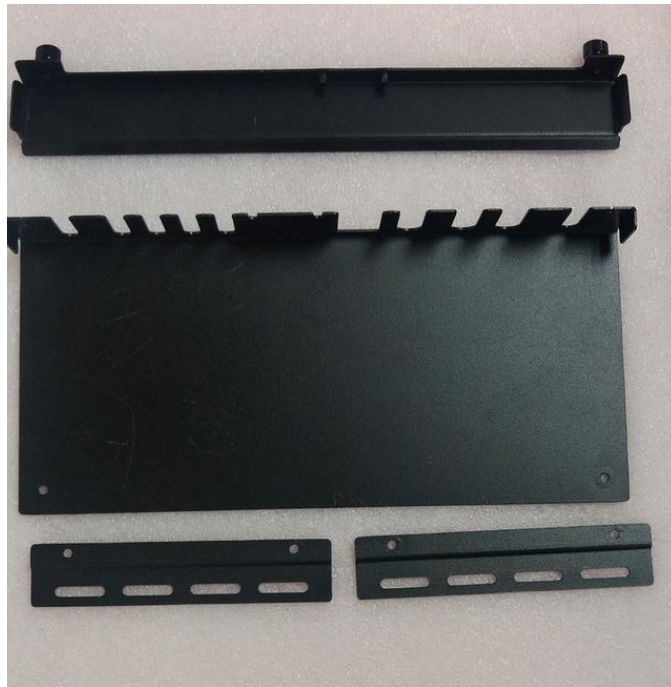
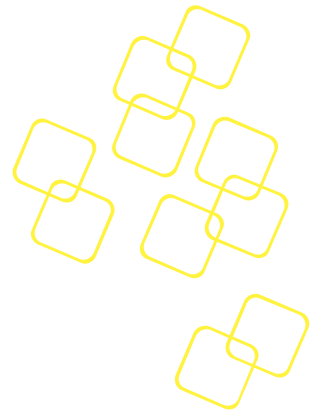
Specification

Wall-Mount

Unit: mm



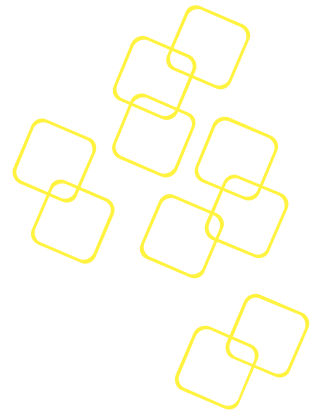
Assembly Illustration



1. Please use 2 screws to fix “Wallmount bracket _Sside for FWA-1010VC” and FWA-1010VC right/left sides of the back.



Right side



Left side

2. Please use 2 screws to fix “Wallmount bracket _1 for FWA-1010VC” and FWA-1010 front side of the back.

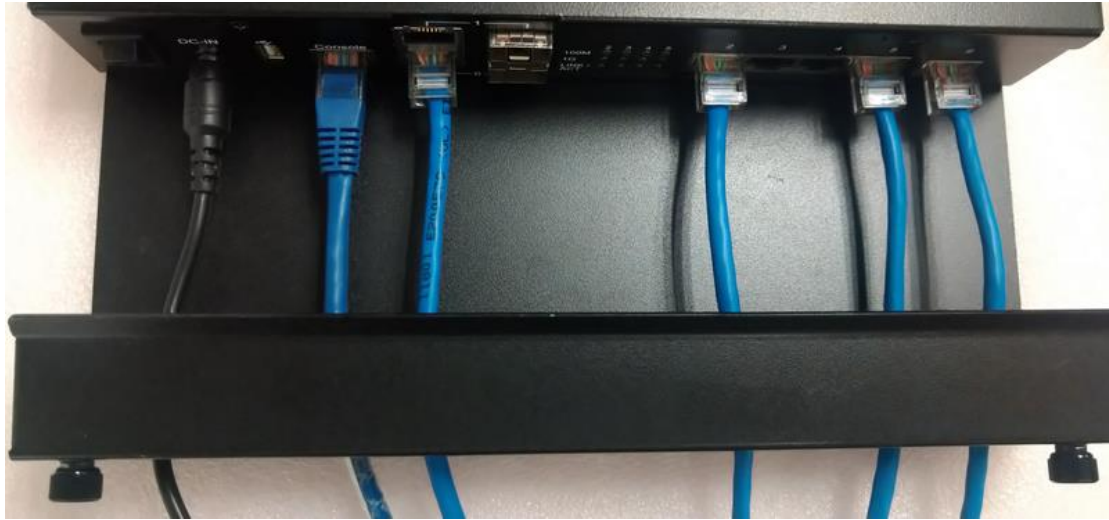


3. Please insert PSU, console & LAN cable in FWA-1010VC





4. Please install "Wallmount bracket _2 for FWA-1010VC " on Wallmount bracket _1"



5. Please mount FWA-1010VC on Wall after WMT-kit installation finish.



