

Ubuntu installation without VGA

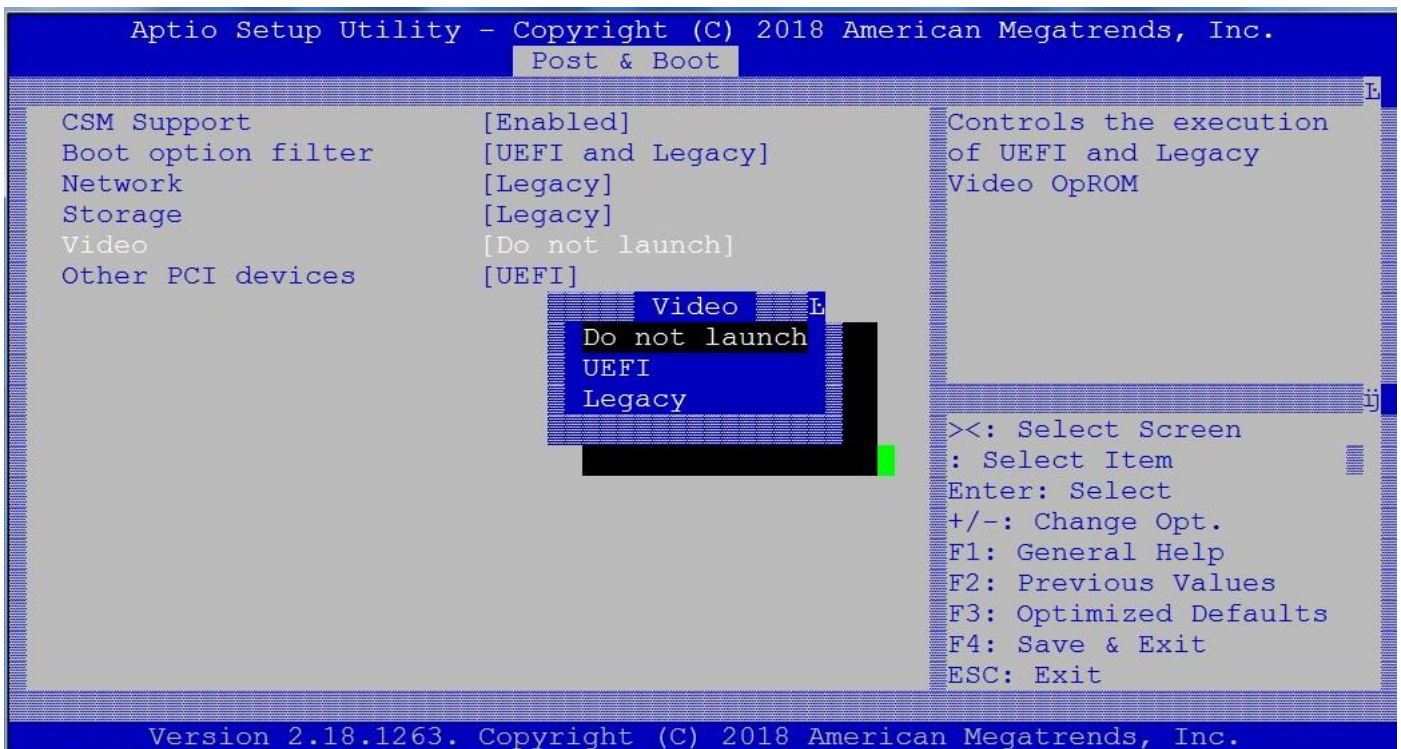
For Ubuntu 16.04 or new version

1. New Ubuntu installation UI seems to support graphic mode, it needs modifying “/isolinux/isolinux.cfg” to disable UI function, we suggest using a utility (ex: rufus) to flash ISO to USB flash, and please look following segment to modify /isolinux/isolinux.cfg

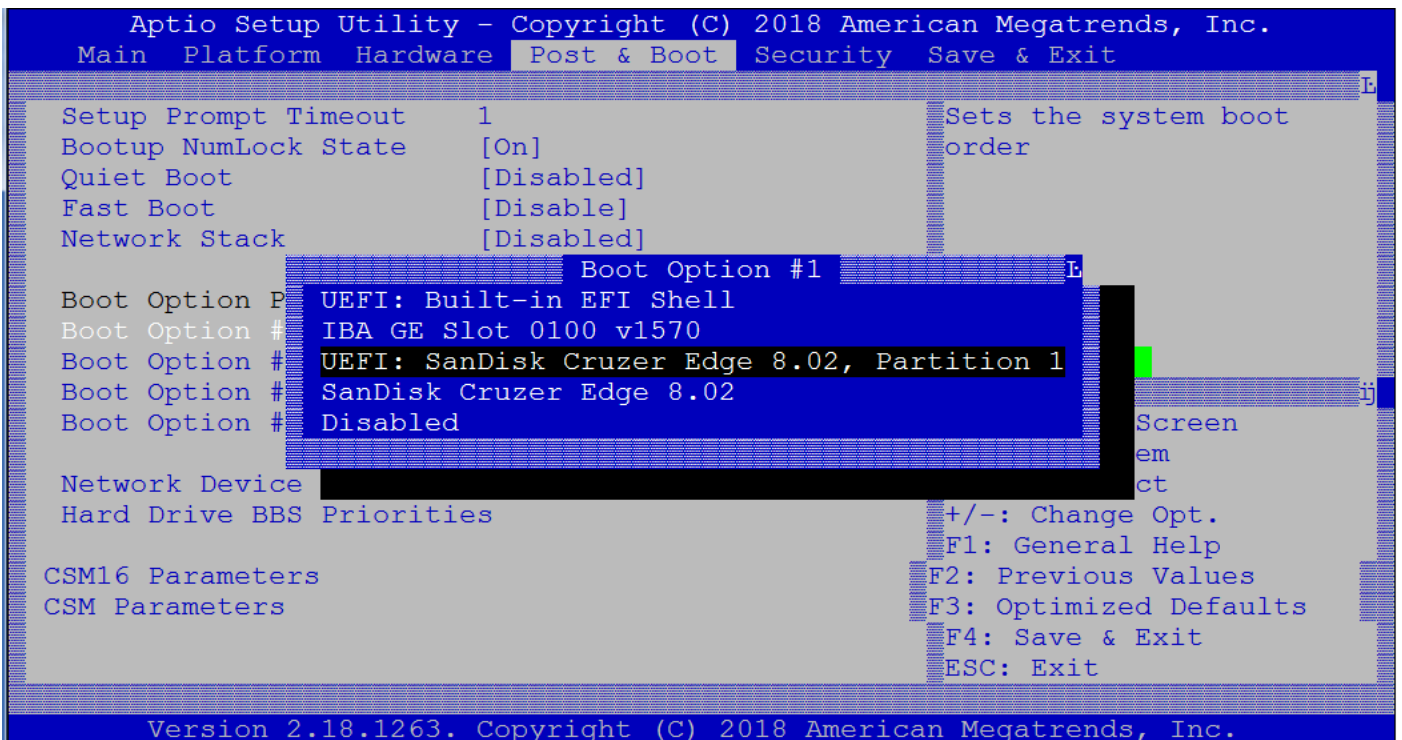
```
# D-I config version 2.0
# search path for the c32 support libraries (libcom32, libutil etc.)
path
include menu.cfg
default vesamenu.c32
prompt 0
timeout 0
#ui gfxboot bootlogo
```

Rufus webpage :<https://rufus.akeo.ie/?locale=e>

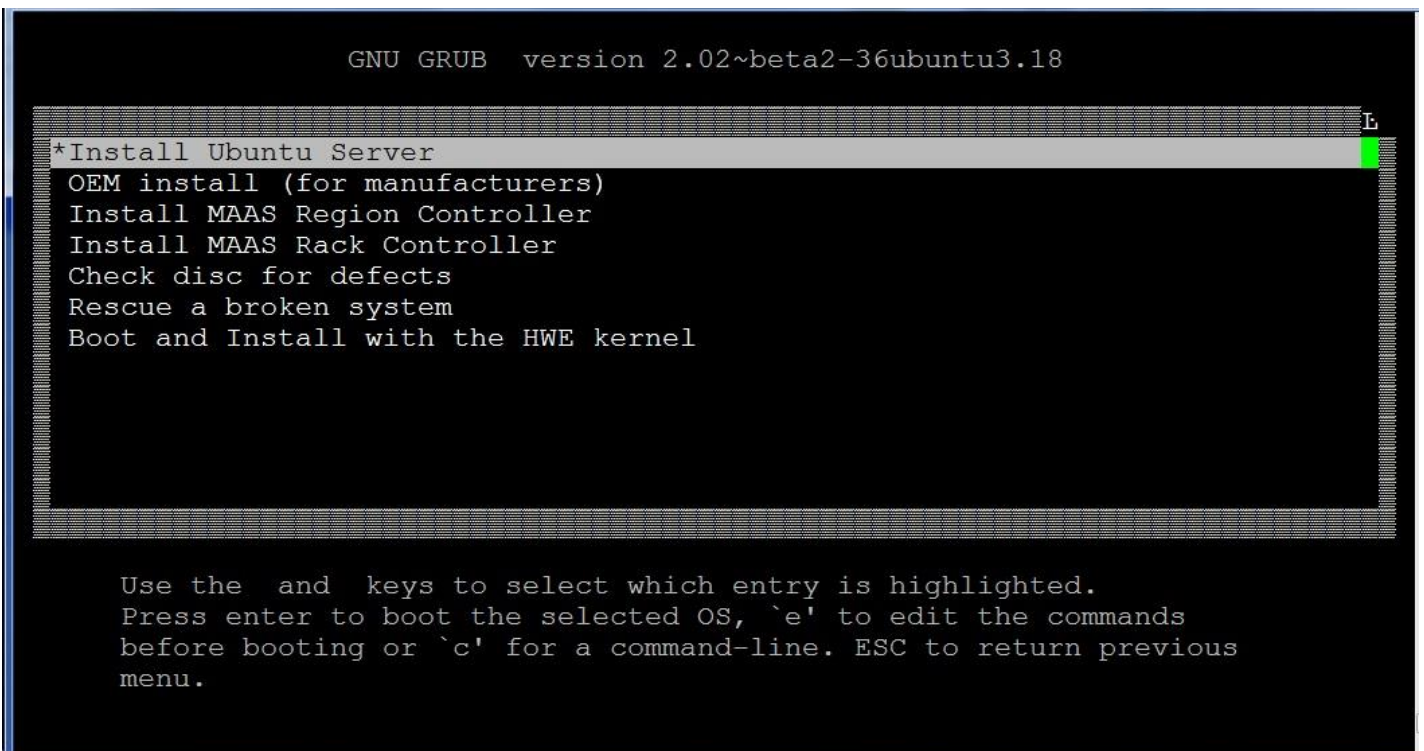
2. If system supports VGA function and user needs using console-redirection to install Ubuntu OS, Please set video as “Do not launch” to disable VGA function.
Post & boot -> CSM Parameters -> video



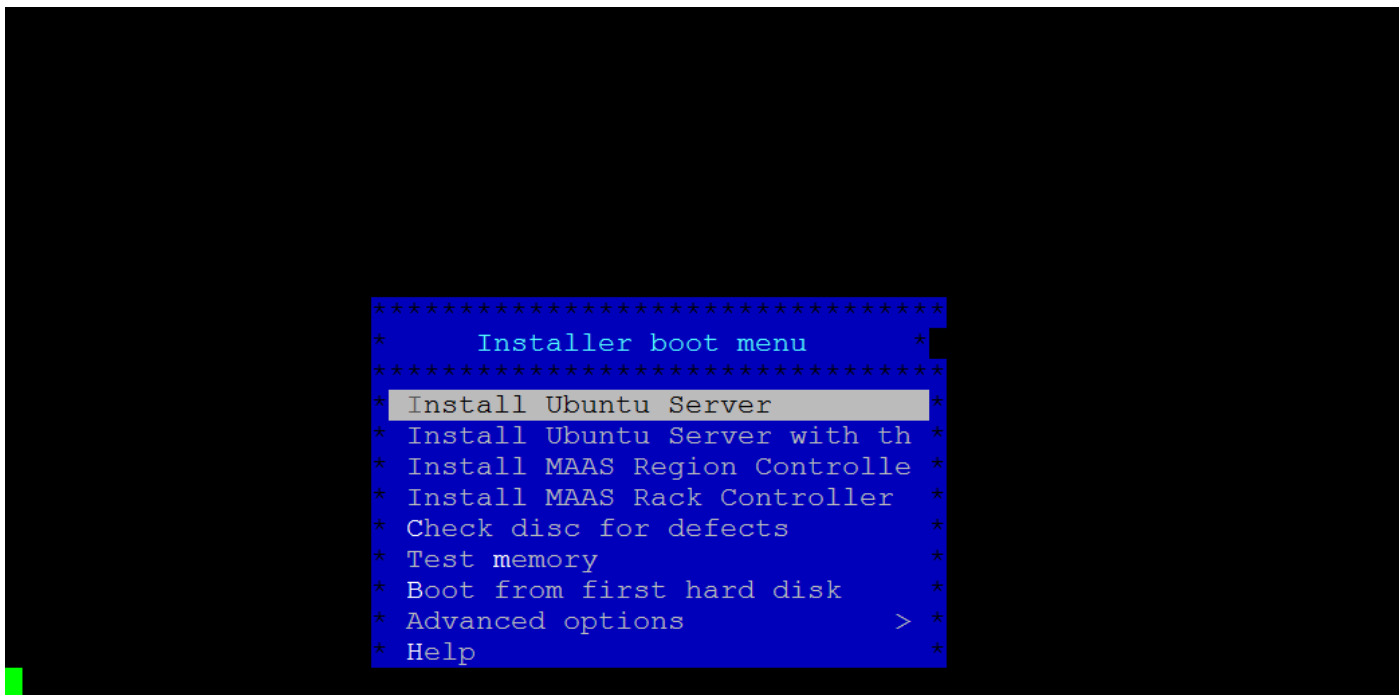
3. Please choose Boot Option #1 “UEFI: XXXXXXXX” , XXXXX means Ubuntu installation USB flash.



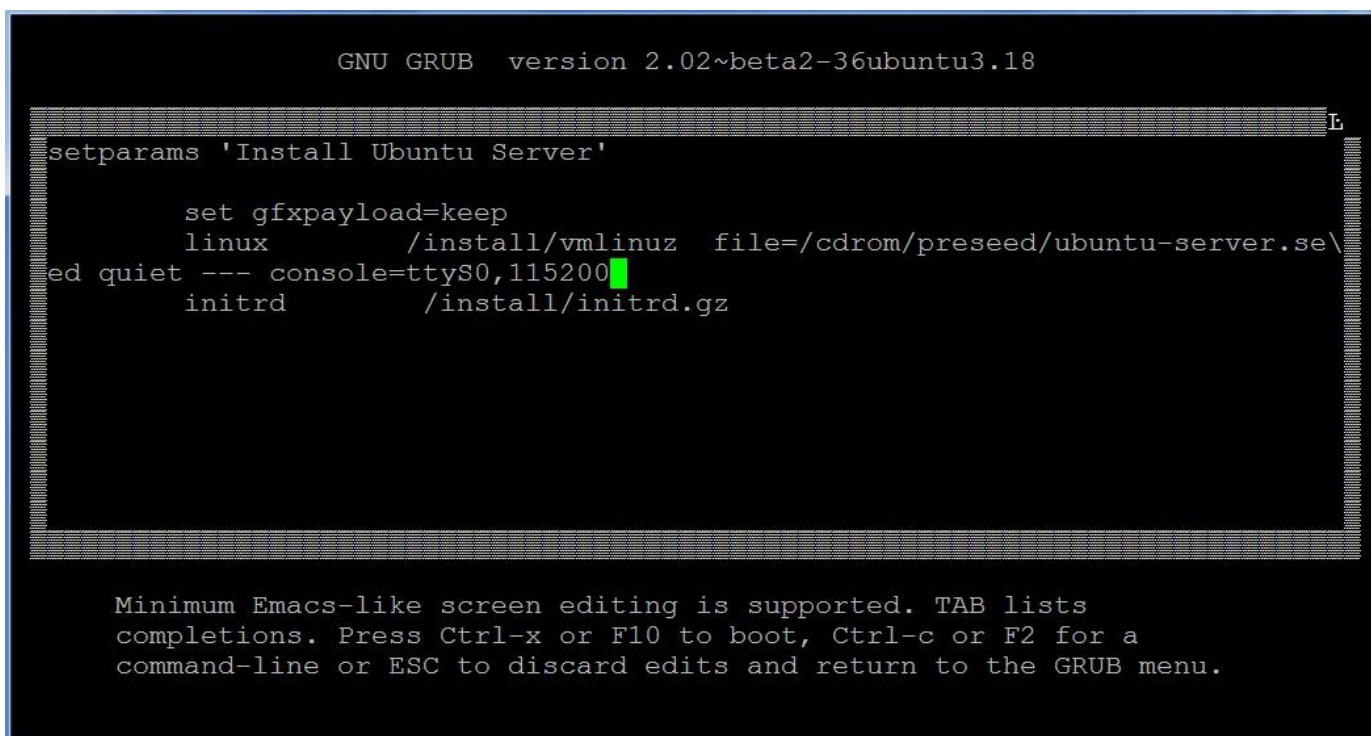
4. Please save BIOS, and system will boot from USB flash by UEFI mode.
5. Please choose “Install Ubuntu Server. If user needs using console-redirection to install Ubuntu OS, please press “C” to modify grub setting, if not, please press “Enter” key to install Ubuntu OS



PS: the UEFI installation menu is “black-white” , and :Legacy installation menu is “blue-white” by console-redirection mode.



Please add “console=ttyS0, 115200” in grub setting If user needs using console-redirection to install Ubuntu OS, and press X to execute Ubuntu OS installation



Please follow Ubuntu installation instruction to install UEFI Ubuntu OS in FWA-T011.

```
lqqqqqqqqqqqqqqqqqqqqqqqqqqqq Loading additional components tqqqqqqqqqqqqqqqqqqqqqqqk
x                                                                                                     x
x [Progress bar] 20%                                                                                   x
x                                                                                                     x
x Retrieving nic-firmware                                                                              x
x                                                                                                     x
mqqqqqqqqqqqqqqqqqqqqqqqqqqqqqqqqqqqqqqqqqqqqqqqqqqqqqqqqqqqqqqqqqqqqqqqqqqqqqqqqqqqqqqqqqqqj
```

It recommends to choose “Force UEFI installation” as yes at “[!] Partition disks” step.

```
lqqqqqqqqqqqqqqqqqqqqqqqqqqqqqq [!] Partition disks tqqqqqqqqqqqqqqqqqqqqqqqqqqqqqk
x                                                                                                     x
x This machine's firmware has started the installer in UEFI mode but it x
x looks like there may be existing operating systems already installed x
x using "BIOS compatibility mode". If you continue to install Debian in x
x UEFI mode, it might be difficult to reboot the machine into any x
lx BIOS-mode operating systems later. x
xx                                                                                                     x
xx If you wish to install in UEFI mode and don't care about keeping the x
xx ability to boot one of the existing systems, you have the option to x
xx force that here. If you wish to keep the option to boot an existing x
xx operating system, you should choose NOT to force UEFI installation x
mx here. x
x                                                                                                     x
x Force UEFI installation? x
x                                                                                                     x
x <Go Back> <Yes> <No> x
x                                                                                                     x
mqqqqqqqqqqqqqqqqqqqqqqqqqqqqqqqqqqqqqqqqqqqqqqqqqqqqqqqqqqqqqqqqqqqqqqqqqqqqqqqqqqqqqqqqqqqj

<Tab> moves; <Space> selects; <Enter> activates buttons
```

Please follow user requirement to choose an item of "Partitioning method:"

```
lqqqqqqqqqqqqqqqqqqqqqqqqqqqq [!!] Partition disks tqqqqqqqqqqqqqqqqqqqqqqqqqqk
x
x The installer can guide you through partitioning a disk (using           x
x different standard schemes) or, if you prefer, you can do it           x
x manually. With guided partitioning you will still have a chance later   x
x to review and customise the results.                                    x
x                                                                            x
x If you choose guided partitioning for an entire disk, you will next     x
x be asked which disk should be used.                                     x
x                                                                            x
x Partitioning method:                                                 x
x                                                                            x
x Guided - resize SCSI2 (0,0,0), partition #2 (sda) and use freed s       x
x Guided - use entire disk                                               a x
x Guided - use the largest continuous free space                          x
x Guided - use entire disk and set up LVM                                 a x
x Guided - use entire disk and set up encrypted LVM                       x
x                                                                            x
x      <Go Back>                                                         x
x                                                                            x
mqqqqqqqqqqqqqqqqqqqqqqqqqqqqqqqqqqqqqqqqqqqqqqqqqqqqqqqqqqqqqqqj]
<Tab> moves; <Space> selects; <Enter> activates buttons
```

Please follow user requirement to choose an item of "[!] Configuring tasksel"

```
lqqqqqqqqqqqqqqqqqqqqqqqqqqqq [!] Configuring tasksel tqqqqqqqqqqqqqqqqqqqqqqqqqqk
x
x Applying updates on a frequent basis is an important part of keeping     x
x your system secure.                                                    x
x                                                                            x
x By default, updates need to be applied manually using package          x
x management tools. Alternatively, you can choose to have this system     x
x automatically download and install security updates, or you can        x
x choose to manage this system over the web as part of a group of        x
x systems using Canonical's Landscape service.                             x
x                                                                            x
x How do you want to manage upgrades on this system?                     x
x                                                                            x
x      No automatic updates                                               x
x      Install security updates automatically                             x
x      Manage system with Landscape                                       x
x                                                                            x
mqqqqqqqqqqqqqqqqqqqqqqqqqqqqqqqqqqqqqqqqqqqqqqqqqqqqqqqqqqqqqqqj]
<Tab> moves; <Space> selects; <Enter> activates buttons
```

Please follow user requirement to choose software item of “[!] Software selection!”

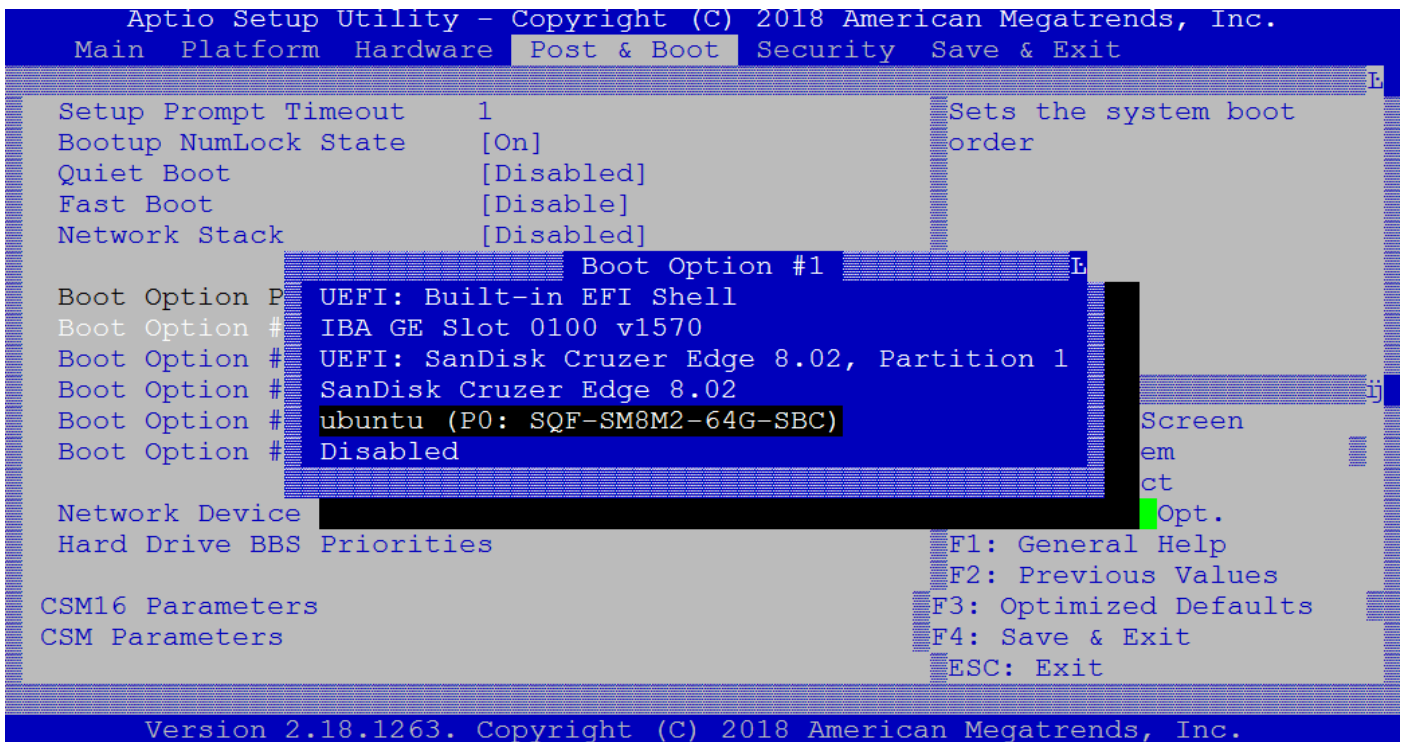
```
lqqqqqqqqqqqqqqqqqqqqqqqqqu [!] Software selection tqqqqqqqqqqqqqqqqqqqqqqqqk
x                                                                                               x
x At the moment, only the core of the system is installed. To tune the                       x
x system to your needs, you can choose to install one or more of the                       x
x following predefined collections of software.                                           x
x                                                                                               x
x Choose software to install:                                                             x
x                                                                                               x
x          [ ] Manual package selection                                                  x
x          [ ] DNS server                                                                x
x          [ ] LAMP server                                                               x
x          [ ] Mail server                                                              x
x          [ ] PostgreSQL database                                                      x
x          [ ] Samba file server                                                        x
x          [*] standard system utilities                                              x
x          [ ] Virtual Machine host                                                    x
x          [ ] OpenSSH server                                                          x
x                                                                                               x
x                                     <Continue>                                         x
x                                                                                               x
mqqqqqqqqqqqqqqqqqqqqqqqqqqqqqqqqqqqqqqqqqqqqqqqqqqqqqqqqqqqqqqqqqqqqqqqqqqqqqqqqqqqqq
```

Please choose <Continue> at “[!] Finish the installation”

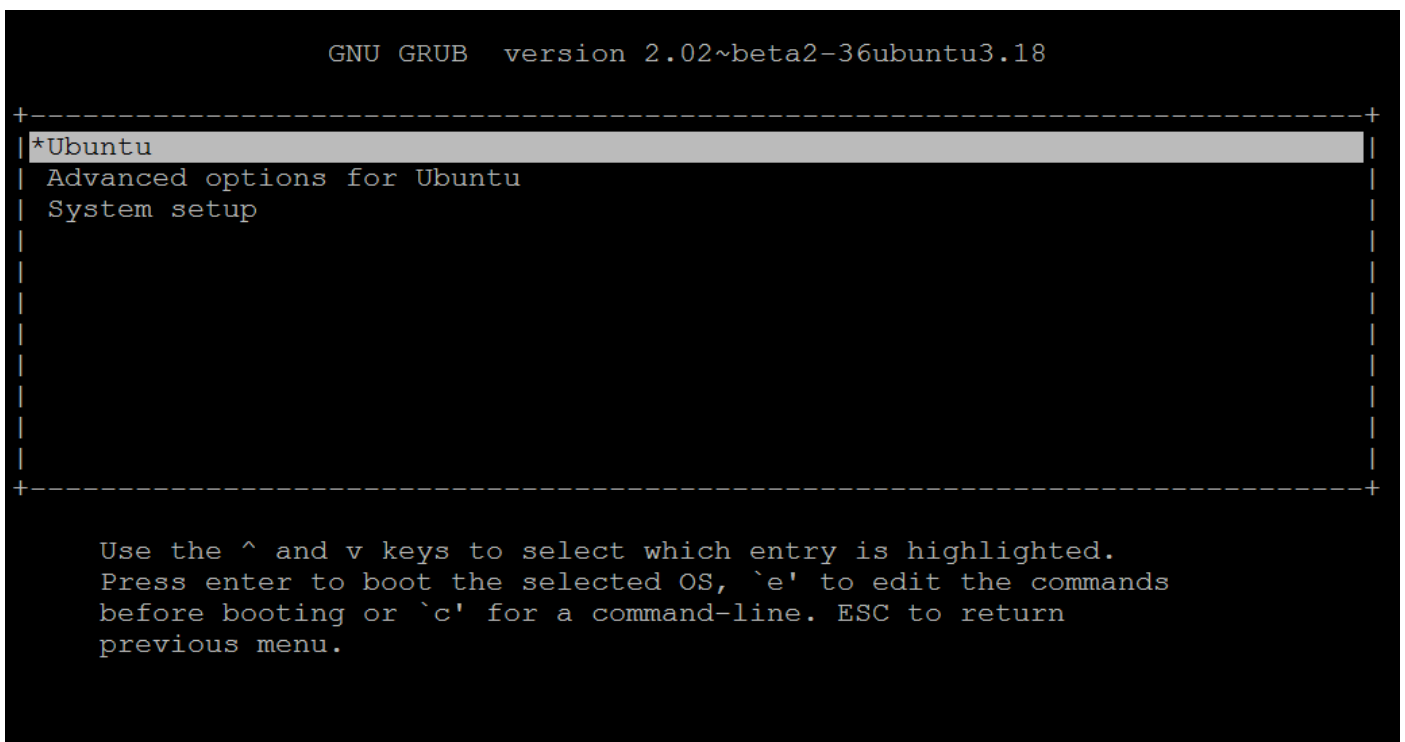
```
lqqqqqqqqqqqqqqqqqqqqqqqqqu [!] Finish the installation tqqqqqqqqqqqqqqqqqqqqqqqqk
x                                                                                               x
lx                                     Installation complete                               x
xx Installation is complete, so it is time to boot into your new system.                x
xx Make sure to remove the installation media (CD-ROM, floppies), so                   x
xx that you boot into the new system rather than restarting the                       x
xx installation.                                                                       x
xx                                                                                               x
mx          <Go Back>                                                                    <Continue> x
x                                                                                               x
mqqqqqqqqqqqqqqqqqqqqqqqqqqqqqqqqqqqqqqqqqqqqqqqqqqqqqqqqqqqqqqqqqqqqqqqqqqqqqqqqqqqqq

<Tab> moves; <Space> selects; <Enter> activates buttons
```

BIOS will show “Ubuntu (XXXXX)” boot item after UEFI OS installation finish”, and please choose this item as “Boot Option #1”



And It will show following GRUB boot-loader menu.



Following segment is a list of UEFI HDD partition, it has an item for “EFI System Partition”

```
ae@ubuntu:~$ sudo parted -l
[sudo] password for ae:
Sorry, try again.
[sudo] password for ae:
Model: ATA SQF-SM8M2-64G-SB (scsi)
Disk /dev/sda: 64.0GB
Sector size (logical/physical): 512B/512B
Partition Table: gpt
Disk Flags:

Number  Start   End     Size    File system  Name                Flags
  1      1049kB  538MB   537MB   fat32        EFI System Partition  boot, esp
  2      538MB   63.0GB  62.5GB  ext4
  3      63.0GB  64.0GB  1024MB  linux-swap(v1)
```